



Treasury Management Operations Contact Information
888.658.7327
treasurymanagementoperations@stellar.com

Enterprise Payment Solutions™ Remote Deposit Complete™

September 2016



Remote Deposit Complete Handbook

All rights reserved. Information in this document is subject to change without notice. Dates contained in this document are provided as estimates only and can be changed at any time at the sole discretion of Jack Henry & Associates, Inc.

No part of this document may be copied, reproduced, stored in a retrieval system, displayed, distributed or transmitted in any form or any means whatsoever (electronic, mechanical or otherwise), including by photocopying or recording for any purpose, without the prior written permission of Jack Henry & Associates, Inc. Making unauthorized copies of this document for any purpose other than your own personal use is a violation of United States copyright laws.

3rd Party Sweep Th; 4lightn; Account Analysis; Account Cross Sell; Account Cross Sell Jumpstart; Account Number Change; ACH/Check Conversion Services Th; ACH Client; ACH Manager; ACH Origination/Processing; Advanced Reporting for Credit Unions; AlertCenter; AlertManager; AllAccess Th; Agent; Agent AWARE; Agent Back Counter Th; Agent Commercial Remote Deposit; Agent Enterprise Duplicate Detection Th; Agent Front Counter; Agent Image ATM; Agent Interactive Capture; Agent Mobile Remote Deposit; Agent Payment Web Services; Agent Payments Gateway; Agent Remote Deposit Interactive; Agent Retail Remote Deposit; Andiamo; Annual Disclosure Statement Online; ArgoKeys; ArgoKeys Branch Sales Automation; ArgoKeys DepositKeys; ArgoKeys LendingKeys; ArgoKeys RelationshipKeys; ATM Manager Pro; ATM Manager Pro - Asset & Site Management; ATM Manager Pro - Cash Management; ATM Manager Pro - Event Management; ATM Manager Pro - Financial Management; AudioTel; Banno Mobile; Basel Report Pro; BladeCenter; BondMaster; Branch Anywhere; Branch Deposit Reporting Pro; Brand Management Services; BusinessManager; Call Report Pro; Cash Automation; Cash Dispenser; Cash Recycler; Centurion Business continuity Planning Th; Centurion Business Recovery Consulting Group; Centurion Co-Location; Centurion Disaster Recovery; Centurion Emergency Notification; Centurion Enterprise-Level Recovery; Centurion Episys Hosted Failover; Centurion Hosted High Availability; CenturiOn LiveVault; Check 21 Cash Letter; Check 21 Exception Processing; CheckCollectPlus; Check Collect Recovery Services; Checkraster; CheckMaster Plus; CheckWriter for Core Director; CIF 20120; Co-Mingle; Cognos 10; Collateral and Document Tracking; Commercial Lending Center; Compliance Access; Core Director; Core Director Teller; Core Director Teller Capture; Creatacard; Cruise; CruiseNet; CTRMaster; CUPRO ALM; CUPRO ALM Express; Customer Payment Portal; Database Cleansing Package; Datalink CU; Demand Account Reclassification; DIME (Document Image Management Engagement); Directline International; Directline OFX; Directline Wires; Dynamic Content Modules; EDCapture Solutions; ECS Digital Data Conversion; ECS OneLook; ECS Paper-to-Digital Conversion; ECS Web; eCTR; Electronic Statements; Electronic Statements - Interactive; Enhanced Account Analysis; Enhanced Loan Application (ELA); Enhanced Loan Collections; Enhanced Member Application (EMA); Enterprise Backup and Tape Encryption; Enterprise Capture Solutions; Enterprise Conversion Solutions; Enterprise Payment Solutions; Episys; Episys Anywhere; Episys Collateral and Document Tracking; Episys Collection Toolkit; Episys Contact Event Manager; Episys Continuity Plan (ECP); Episys Continuity Services; Episys Continuity Services Plus; Episys DataStore; Episys Dealer Reserve Accounting; Episys Escrow Module; Episys External Loan Processing Interface; Episys Failover Certification; Episys Failover Self-Certification; Episys ID Scanner Interface; Episys Management Server; Episys Overdraw Tolerance; Episys PowerCheckUp; Episys Quest; Episys Real Time External Loan Interface; Episys Replication Failover; Episys Skip Payment; Episys University; Episys Vaulting; Episys Virtualization; EPS Remote Deposit Capture; Extra Awards; Failover; Fed-File Pro; FlexPass; FormSmart; Genesis Check Imaging Suite; Gladiator; Gladiator Advanced Rvltware Protection; Gladiator Consulting Services; Gladiator CoreDEFENSE Managed Security Services; Gladiator eBanking Compliance Services; Gladiator eCommercial SAT; Gladiator Enterprise Network-Design, Implementation & Support Services; Gladiator Enterprise Security Monitoring; Gladiator Enterprise Virtualization Services; Gladiator eSAT; Gladiator eShield; Gladiator Hosted Network Solutions; Gladiator IT Regulatory compliance/Policy Products; Gladiator Managed IT Services; Gladiator Managed Unified Communications Services Th; Gladiator NetTeller Enterprise Security Monitoring; Gladiator Network Services; Gladiator Phishing Defense and Response Service; Gladiator Social Media Compliance Services; Gladiator Technology; Gladiator Unified Communications Services; Gladiator Website Compliance Review; goDough; GoldPass; Hosted Pay Page; iBizManager; Image ATM; Image ATM Capture and Reconciliation; ImageCenter; ImageCenter ATM Deposit Management; ImageCenter Image capture; ImageCenter Interactive Teller Capture; Intellix CIF 20/2 Outlook Renewal Engagement; Intellix Consulting; InTouch Voice Response; Investor Servicing; iPay Business BillPay; iPay Consumer Bill Pay; iPay QuickPay; iPay Solutions; Isoceles; iTalk; Jack Henry & Associates, Inc.; Jack Henry Banking; JHA Consumer Pieces; JHA Get Smart; JHA Merchant Services; JHA Money Center; JHA Outlook Processing Services; JHA Payment Processing Solutions; JHA Program Management Services; jhaAddress Verity; jhaCall Center; jhaCall Center In-House; jhaCall Center Outsourced Services; jhaCall Center Outsourced Services After Hours; jhaCall Center Outsourced Full Business Services; jhaCall Center Outsourced Select Services; jhaDirect; jhaEnterprise Workflow; jhaID Scan; jhaKnow; jhaKnow Express; jhaPassPort Debit Optimizer; jhaPassPort; jhaPassPort.pro; jhaPassPort Direct; jhaPassPort Extra Awards; jhaPassPort Fraud Center; jhaPassPort Hot Card Center; jhaPassPort Promotions and Consulting Services; jhaPassPort Switch; jhaArchive; jVault; jXchange; Kernel; Know-It-All Credit Programs; Know-It-All Education; Know-It-All Learning Management Portal; Know-It-All Now; Landlord/Tenant Security Deposit Tracking; LendingNetwork; Loan Collateral Tracking; Margin Maximiser Interactive; Margin Maximizer Interactive; Margin Maximiser MaxConnect; Margin Maximizer Maxconnect; Margin Maximiser Pronto; Margin Maximizer Pronto; Margin Maximiser Suite; Margin Maximizer Suite; Masterlink; Maxconnect Interactive; MedCashManager; Member Business Services; Member Privilege; Mobile Website; Multifactor Authentication; Mutual Fund Sweep; Net.Check; NetTeller NetTeller BillPay; NetTeller Cash Management; NetTeller Memberconnect; NetTeller Online Banking; NetTeller Security Manager; NetTeller Text Alerts; OFX Gateway; OnBoard Loans; OnNet; OnTarget; OnX; OpCon; Opening Act; Opening Act Express; Optimizer; Participation Lending; PassBook; Point; PointMobility; PowerOn; PowerOn2; PowerOn Marketplace; PowerOn Studio; PPS FirstPIN; PPS ImageSelect; PPS PIN Change Service; Prepaid Cards; Professional Consulting Services; PROFITability9; Organizational PROFITability9 Analysis System; Prexult PROFITability9 Analysis System Th; PROFITability Budget; PROFITability Reporting Service; PROFITstare; PROFITstar ALM Budgeting; PROFITstar Budget; PROFITstar Classic; PROFITstar Reporting Service; ProfitStars; ProfitStars Direct; ProfitStars EPS SmartPay Business; ProfitStars EPS SmartPay Express; ProfitStars mRDC; ProfitStars Synergy; Real Time; RefiAnalyzer; Regulatory Reporting Solutions Th; Relationship 360; Relationship Profitability Management (RPM); RemitCentral; RemitPlus; RemitPlus Express; RemitPlus HRCM; RemitPlus Remittance/Lockbox; Remitweb; Remote Deposit AnyWhere; Remote Deposit Complete; Remote Deposit Express; Remote Deposit Now; Remote Deposit Scan; ReportHub; RPM Reporting Service; Shared Branch; SigMaster; Silhouette Document Imaging; SilverLake Real Time; SilverLake System; Smart EIP; Smart GL; SmartSigh smsGuardian; Store & Forward; Streamline Platform Automation; Streamline Platform Automation - Deposits; Streamline Platform Automation - Loans; Summit Support9; Sweep Account Processing; SymAdvisor; SymChoice Loan; SymConnect Th; SymForm; SymForm PDF; Symitar; Symitar ATM Services; Symitar Fraud Management; Symitar EASE; SymX; SymXChange; Synapsys; Synapsys Lobby Tracking; Synapsys Member Relationship Management; Synergy API Integration Toolkit; Synergy AutoImport; Synergy Automated Document Recognition (ADR); Synergy Batch Document Recognition (BDR); Synergy Check Archive; Synergy DataMart; Synergy Document Management; Synergy Document Recognition; Synergy Document Tracking; Synergy eDistribution; Synergy Enterprise Content Management (ECM); Synergy eSign; Synergy eSignWeb; Synergy eStorage; Synergy Express; Synergy ID Scan; Synergy iSign; Synergy Kofax Capture; Synergy PowerSearch; Synergy Reports; Synergy Workflow Management; TellerMaster; TheWayiPay; TimeTrack Human Resources; TimeTrack Payroll System; TimeTrack Time and Attendance; Transaction Logging and Vaulting Server; Transaction Logging Server; ValuePass; Vehicle Pricing Interface; Vertex Teller Automation System; Vertex Teller Capture; Virtual Transaction Logging Server; WebEpisys; Website Design & Hosting; Website Security Services; Wire Management; Yellow Hammer; Yellow Hammer ACH Origination; Yellow Hammer BSA; Yellow Hammer BSA Regulatory Consulting Service; Yellow Hammer EFT Fraud Detection; Yellow Hammer Fraud Detective; Yellow Hammer SAR Center; Yellow Hammer Wire Origination; Xperience

Cutting-Edge IT Solutions for the Future of Credit UnionsSt*; Know-It-All - Empowering Users Through Knowledge"; Leading through technology ... guiding through support"; Powering Actionable Insight"; Snap it Send it Spend it"; The Depth of Financial Intelligence"; WeAre Looking Out For You"; Where Tradition Meets Technology"

Various other trademark/s and service marks used or referenced in this document are the property of their respective companies/owners.

Contents

Introduction	1
System Requirements.....	2
Compatibility View Settings	3
Temporary Internet Files and History Settings	4
Trusted Sites.....	5
Privileges and Roles.....	6
Available Resources.....	7
Process Workflow	7
Session Timeouts	7
Logging In	8
Creating a Secret Question.....	8
Choosing an Identification Phrase.....	9
Installing Device Control.....	10
Working with Remote Deposit Complete.....	16
Detecting Duplicate Items	17
The Open Deposits Page.....	17
Creating a New Deposit.....	18
The Deposit View Page	20
The Data Entry View Page	25
Adding to a Deposit	31
Closing Deposits for Processing.....	31
Deleting a Deposit	33
Notifications	34
The Transaction Status Summary.....	36
Editing Approved Transaction Amounts	38
Editing Effective Dates.....	40
Voiding Transactions	41
Resolving Transactions.....	42
Deposit Results Report	43
Viewing Transaction Details	45
Viewing Deposit Details.....	48

Bulk Check Operations	48
Bulk Approve.....	49
Bulk Capture	51
Bulk Void.....	51
Bulk Resolve	51
Limit Exception Handling	52
Suspended Items that are Approved.....	54
Scanner Device Control.....	55
Device Control Indicators	55
Status Messages and Alerts.....	57
Changing a Scanner	58
Uninstalling a Scanner	60

Introduction

The *Remote Deposit Complete Handbook* is a guide for processing transactions in the application. Prior to working with the application, you should have received the following information from the financial institution.

- The generic URL to the application: <https://smartpay.profitstars.com/business/login>
- Administrator login credentials. Upon logging in to the system, you will be prompted to change your temporary password. A password must be between 8-15 characters and contain at least one upper case letter, one lower case letter, and one number.

User Name: admin

Temporary Password: (see email) *Note: The Financial Institution has the ability to reset the Admin password under Manage Customers, if necessary.*

Company: Test 549086

FIGURE 1 - SAMPLE ADMINISTRATOR CREDENTIALS

- Your Merchant ID and scanner model/scanner number
- Instructions for any EPS Education training you wish to schedule, to better learn the application

NOTE: EPS Support is not available for training in the use of the application.

In addition to the login letter, your financial institution should have provided you with the *Scanner Installation (New UI) Quick Start: Remote Deposit Complete*, a guide that assists with the installation of a scanner and Device Control, an EPS application used to manage scanners with RDC.

The Remote Deposit Complete application provides the ability to process your customers' checks through high-speed or single-check scanners to convert them to electronic image transactions and later be credited to the proper bank account(s). The system will also detect duplicate transactions.

Checks can be scanned throughout the day, and their amount will be added into the deposit total. A deposit will consist of all transactions created that day, unless otherwise noted. For example, a transaction given a future effective date will not be deposited until such time. The system can detect duplicate transactions within 75 days of the original transaction being created. ACH items will be deposited separately from Check 21 items.

Optional features available with this application include the following:

- Keyed data entry with or without additional custom fields
- Custom Batch ID
- Deposit Slip ID number

- Adjustment limit
- Default payment type
- A deposit for each batch. Deposits can consist of multiple batches of checks (the default option), or each batch of checks can be a separate deposit. ACH items will be deposited separately from Check 21 items. It is recommended that merchants submit deposits at least one hour before their financial institution's cut off time, in the event a batch needs attention.

NOTE: Your menu options may differ slightly from those pictured throughout this document.

System Requirements

In addition to a high-speed Internet connection, the following components are required for working with the application(s).

For the PC:

- Local administrative rights
- USB port 2.0 or higher

For Microsoft® Windows®:

- Windows 7: Microsoft Internet Explorer® 11 or Google Chrome™
- Windows 8.1: Microsoft Internet Explorer 11 or Google Chrome
- Windows 10: Microsoft Internet Explorer 11 or Google Chrome
- .NET® Framework 4.6 or higher

NOTE: The current version of Chrome and its two previous versions are supported.

The application does not support Apple® Boot Camp® or any virtualization software.

The following scanners support this application's features.

Scanner	Model Supported
Panini®	I:Deal® WI: Deal My Vision X Vision X
Digital Check®	CX30 TS230 TS240

Scanner	Model Supported
RDM®	EC7000i EC7500i
Epson®	Capture One TMS 1000
Unisys Burroughs®	Micro EX Micro Elite Pro SmartSource® Professional Elite SmartSource Merchant Elite Value

Compatibility View Settings

Adding the EPS URL to the Compatibility View Settings feature of Internet Explorer may help with viewing certain features in the application.

1. Open Internet Explorer. From the top navigational menu, select **Tools | Compatibility View Settings**.

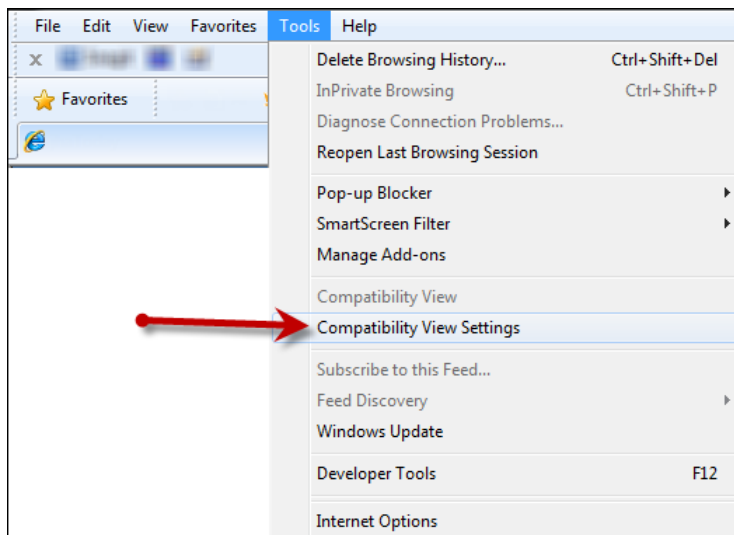


FIGURE 2 - COMPATIBILITY VIEW SETTINGS

2. The *Compatibility View Settings* window appears. Within the *Add this website* field provided, enter <https://smartpay.profitstars.com> and select **Add**.
3. Select **Close** at the bottom of the *Compatibility View Settings* window.
4. Select **OK** from the bottom of the *Internet Options* window.

Temporary Internet Files and History Settings

Configuring these settings can help with keeping the pages you navigate throughout the system consistently refreshed with information.

1. Open Internet Explorer. From the top navigational menu, select **Tools | Internet Options**.
2. From the tabs at the top of the *Internet Options* window, select **General**.

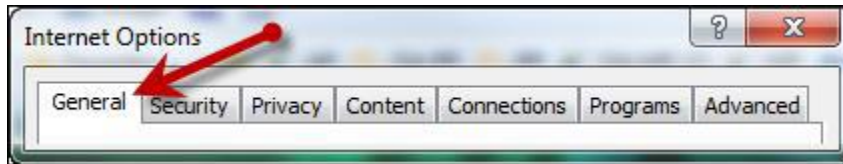


FIGURE 3 - GENERAL TAB FOR INTERNET OPTIONS

3. Under the *Browsing history* section, select the **Settings** option.

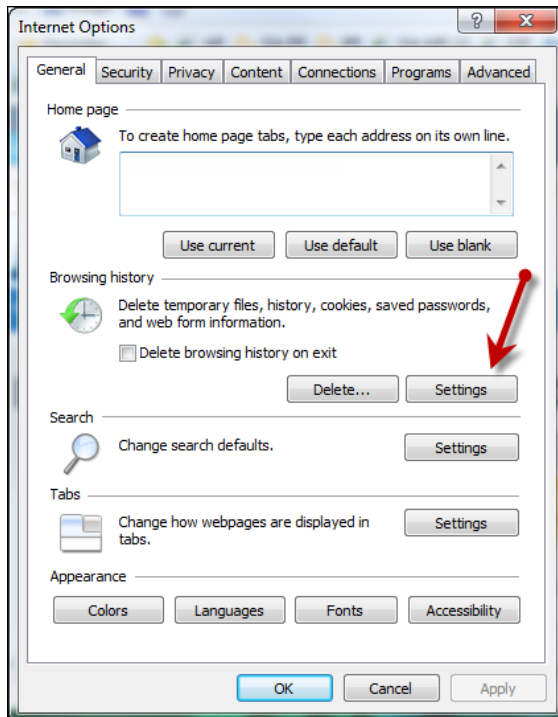


FIGURE 4 - SETTINGS OPTION UNDER BROWSING HISTORY

4. The *Temporary Internet Files and History Settings* window appears. Under *Check for newer versions of stored pages*, select the **Every time I visit the webpage** option.

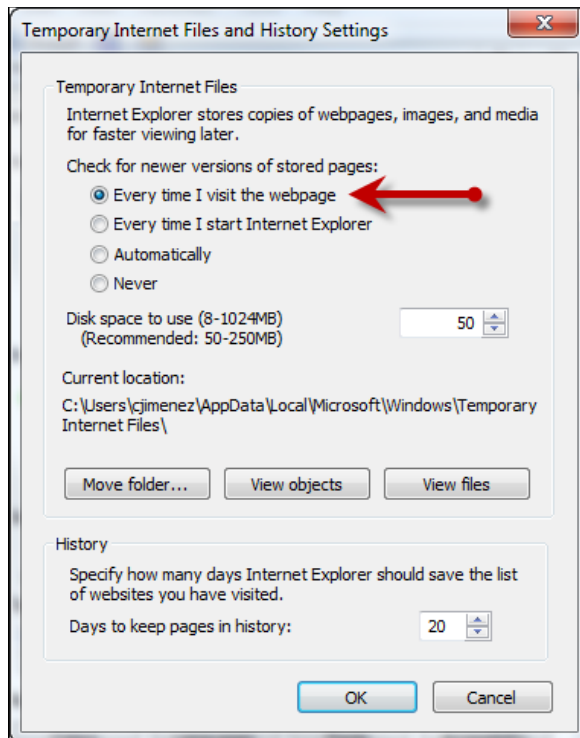


FIGURE 5 - TEMPORARY INTERNET FILES AND HISTORY SETTINGS

5. Select **OK** at the bottom of the *Temporary Internet Files and History Settings* window.
6. Select **OK** from the bottom of the *Internet Options* window.

Trusted Sites

A user will need to ensure that the application URL is added to the **Trusted Sites** option in *Internet Settings*. Use the following steps to add the website to your Trusted Sites.

1. Open Internet Explorer. From the top navigational menu, select **Tools | Internet Options**.

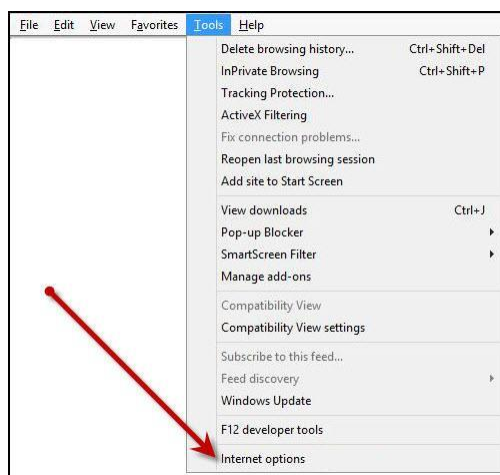


FIGURE 6 - INTERNET OPTIONS

- From the tabs at the top of the *Internet Options* window, select **Security**.

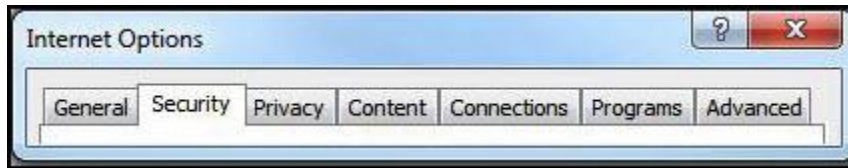


FIGURE 7 - SECURITY TAB UNDER INTERNET OPTIONS

- Select the **Trusted Sites** icon to activate the **Sites** option. Select **Sites**.

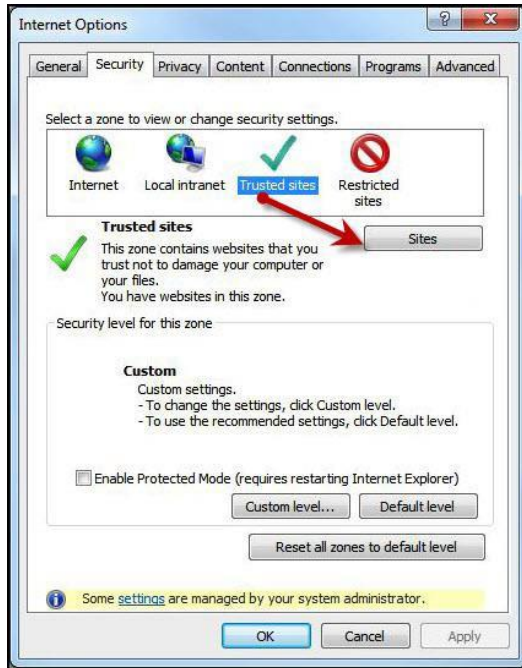


FIGURE 8 - SITES OPTION UNDER TRUSTED SITES CATEGORY

- The *Trusted Sites* window appears. In the *Add this website to the zone* field, enter the URL: <https://smartpay.profitstars.com> and select **Add**.
- Select **Close** at the bottom of the *Trusted sites* window.
- From the bottom of the *Internet Options* window, select **OK**.

Privileges and Roles

The Admin user will need to assign either the **RDC User** or **RDC Admin** role in order for you to access this application. The following roles are within the **Customer Services** privilege.

Privilege	Role	Description
Customer Services	RDC Admin: Full access to both roles.	Create, scan, and submit items as a transaction.

Privilege	Role	Description
Customer Services	RDC User: Limited access to both roles.	Create and scan items, but not submit them as a transaction.

NOTE: The *RDC Admin* role does not grant you Administrator privileges, only the ability to submit transaction items for processing.

For a complete walkthrough about assigning privileges and roles, see the *User Administrator Handbook* for instructions.

Available Resources

If you have questions about using the Remote Deposit Complete application, please contact your first line of support for more information.

For a complete guide on how to run reports using the information processed with the application, please see the *User Reports Handbook* for instructions.

Process Workflow

The below figure describes the process for making a deposit using Remote Deposit Complete.

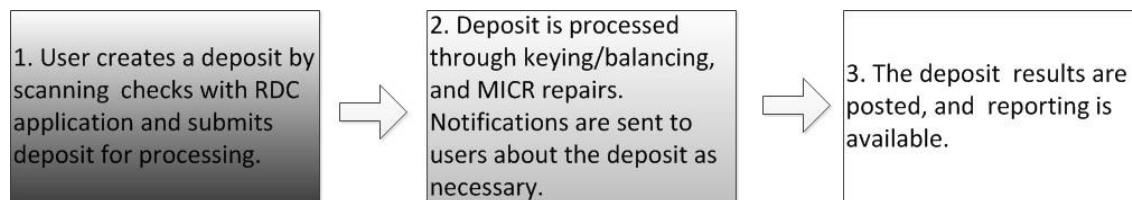


FIGURE 9 - RDC PROCESS WORKFLOW

Session Timeouts

The system will automatically log off a user who has been inactive for at least 30 minutes. A *Session Timeout Warning* appears two minutes before the user is set to be logged out to give them an opportunity to remain logged in. Click **OK** to remain logged in.

Logging In

To log in to your secure Remote Deposit Capture site, open your web browser and go to: <https://smartpay.profitstars.com/business/login/stellarbank>

(Add this link to your favorites!)

1. Once at the provided URL address, complete the *User Name*, *Password*, and *Company* fields. Only the passwords are case-sensitive. Click **Login**.
2. The system will prompt you to change your password. Passwords expire every 90 days and are case-sensitive. Use the following guidelines when creating a new password:
 - At least 1 uppercase letter
 - At least 1 lowercase letter
 - At least 1 number
 - 8-15 characters in length
3. Select **Update Password**.

Creating a Secret Question

A secret question is a tool used when you forget your password and can have another temporary password generated and sent to an email address. Without an email address in a user's profile, that user will not be able to answer a secret question for a new password for access into the system. The merchant admin will need to manually edit/enter an email address for each merchant user, so that merchant user has the option to request a new password by answering a secret question in the application. Secret questions do not need to be a complete question or contain a question mark. Secret questions and answer are not case-sensitive fields.

Once an admin has entered an email address for the merchant user profile, use the following steps to configure the secret question that will be asked of the user, before a new password can be generated and sent to the applicable email address. If the secret question is answered correctly, you will receive an email with a new temporary password.

NOTE: Single-sign on users will not need to establish a secret question.

1. Log in to the application, and select **User menu | My Settings**.

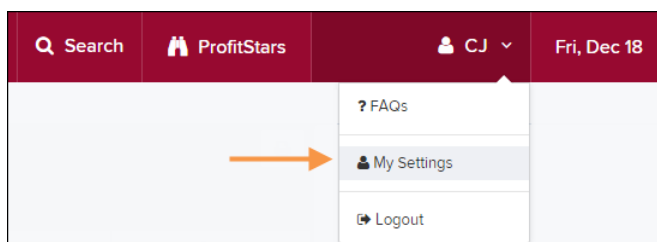


FIGURE 10 - MY SETTINGS

- The system will prompt you for your current login password in order to reach the *My Settings* page. Once there, make changes to the **Change Password**, **Secret Question**, and/or **Authorized Caller** sections, as needed. Select **Update** when finished.

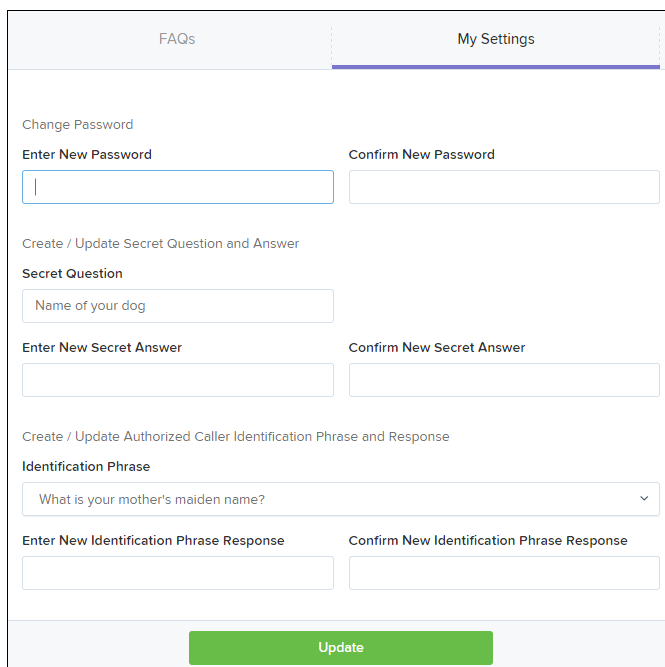


FIGURE 11 - MY SETTINGS PAGE

Choosing an Identification Phrase

The EPS Support team answers questions about EPS products in the event you need additional help with an application. EPS takes support-related calls from users who have been designated as an authorized caller by the Admin user. If you have been designated as an authorized caller, you will need to set up an identification phrase and answer to verify your status when calling EPS Support for assistance.

Authorized callers: For specific questions about an application, please contact our support team at 877-542-2244 or at epssupport@profitstars.com.

NOTE: Non-authorized callers who contact EPS Support will be referred back to their first line of support.

- Log in to the application, and select **User menu | My Settings**.
- The system will prompt you for your current login password in order to reach the *My Settings* page. Make changes to the *Identification Phrase* sections, as needed.
- Type the answer to the question in the **Enter New Identification Response** field, and again in the **Confirm New Identification Response** field. EPS Support will verify this answer when you call. From this page, you can also make changes to your password or secret question and answer if needed. Select **Update** when finished.

Installing Device Control

If you are accessing the application for the first time, you will need to install Device Control, a feature used to manage your scanner. Device Control will need to be installed before you can begin making deposits.

NOTE: If you have already installed Device Control via instructions from your financial institution or from the *Scanner Interface Conversion: Remote Deposit Complete* document, you may skip the following steps and proceed to the next section of this document.

1. Navigate to the system application, and complete the **User Name**, **Password**, and **Company** fields. Select **Login**.
2. From the top of the page, select **Transactions**.

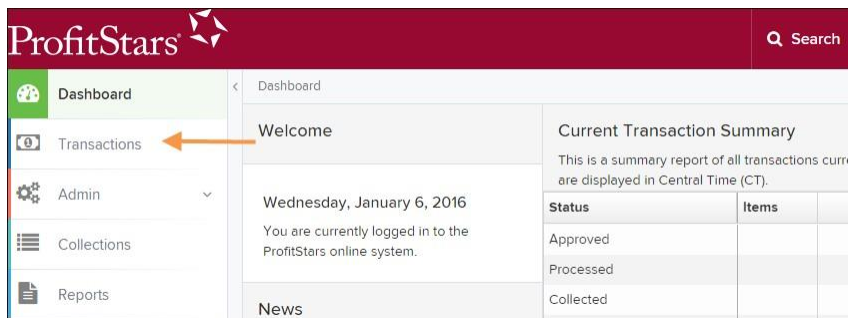


FIGURE 12 - TRANSACTIONS OPTION

3. Under *Check Processing*, select **Remote Deposit Complete**.

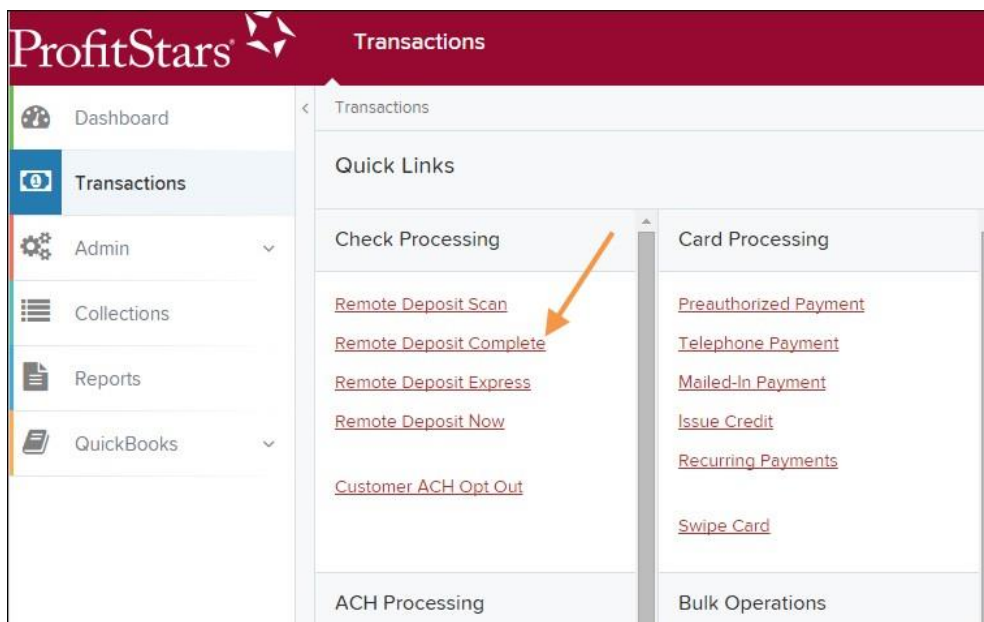


FIGURE 13 - REMOTE DEPOSIT COMPLETE OPTION

4. The *Scanner Interface* prompt appears, informing you that Device Control is attempting to launch. Select **OK** to continue.



FIGURE 14 - CONFIRMATION TO LAUNCH DEVICE CONTROL

5. The system will prompt you to begin installing Device Control. Select **Install** to continue.



FIGURE 15 - PROMPT TO INSTALL DEVICE CONTROL

6. The Device Control will check for any browser updates that may be necessary. If you do not have a group policy conflict, please proceed to the next step. If you have a group policy that may conflict with any browser setting updates, a message will appear (see below). Paste the error details (now placed on your computer clipboard) into an email and/or document for your technical support staff to view. Once this issue has been resolved, retry the upgrade.

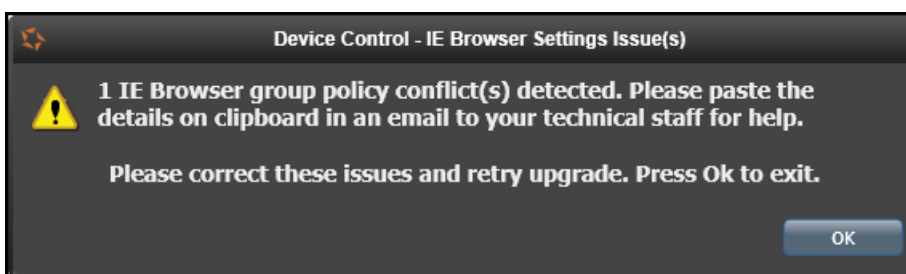


FIGURE 16 - BROWSER SETTING GROUP POLICY ERROR

7. The *Internet Browser Settings Update* window will display. Read the agreement, and select **Accept** to acknowledge and agree to the terms described.



FIGURE 17 - INTERNET BROWSER SETTINGS UPDATE WINDOW

8. The system will ask you to log out of the application. After logging out of the system, close all windows for Internet Explorer or Google Chrome. Select **OK** to continue.

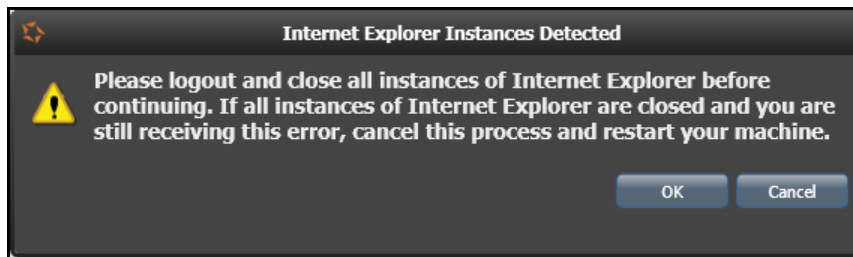


FIGURE 18 - PROMPT TO LOG OUT OF THE APPLICATION AND CLOSE ALL BROWSER WINDOWS

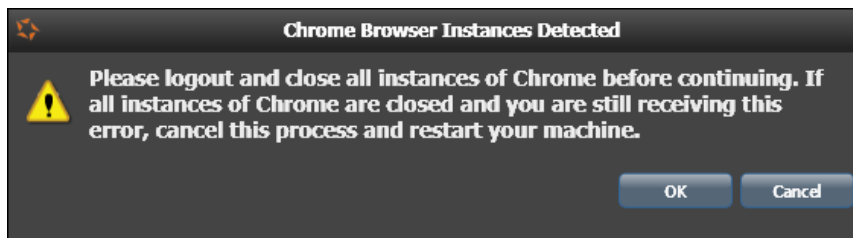


FIGURE 19 - PROMPT TO LOG OUT OF THE APPLICATION AND CLOSE CHROME INSTANCES

9. Restart your computer. After you have restarted your computer, you may log back in to the application and select **Transactions**.
10. Under *Check Processing*, select **Remote Deposit Complete**.
11. The *Open Deposits* page appears. Select **Create New Deposit**.

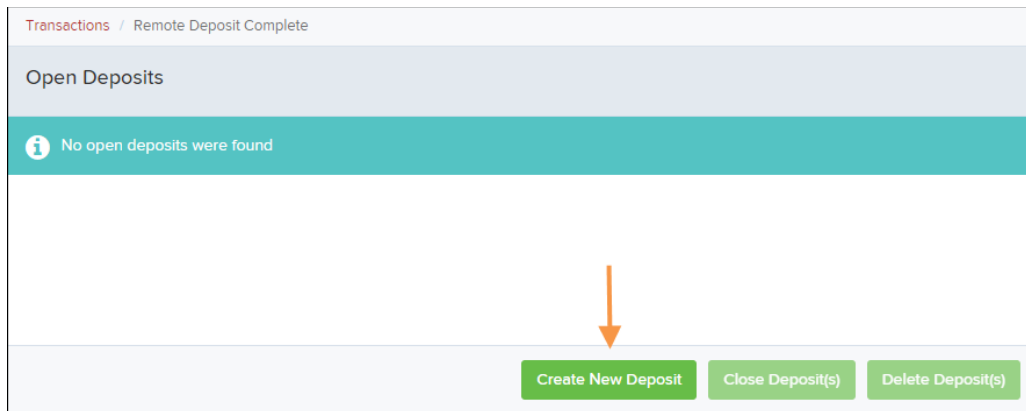


FIGURE 20 - OPEN DEPOSITS PAGE, CREATE NEW DEPOSIT

12. Device Control will initialize. Select which scanner and model you wish to install for use and click **Install**.



FIGURE 21 - SELECTING A DEVICE AND MODEL

13. The *Add/Remove Devices* window appears. Select the scanner you wish to add, and select **Install**.

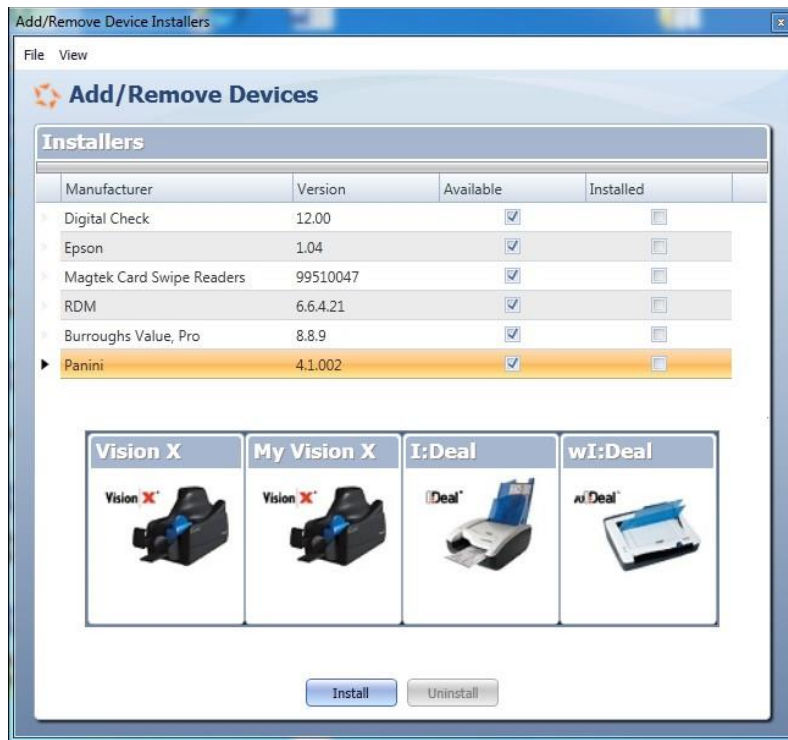


FIGURE 22 - ADD/REMOVE DEVICES

- The *Install Wizard* tool appears. Disconnect the scanner you wish to install from your computer, and exit all other applications. Select **Next** in the *Install Wizard* tool to continue.

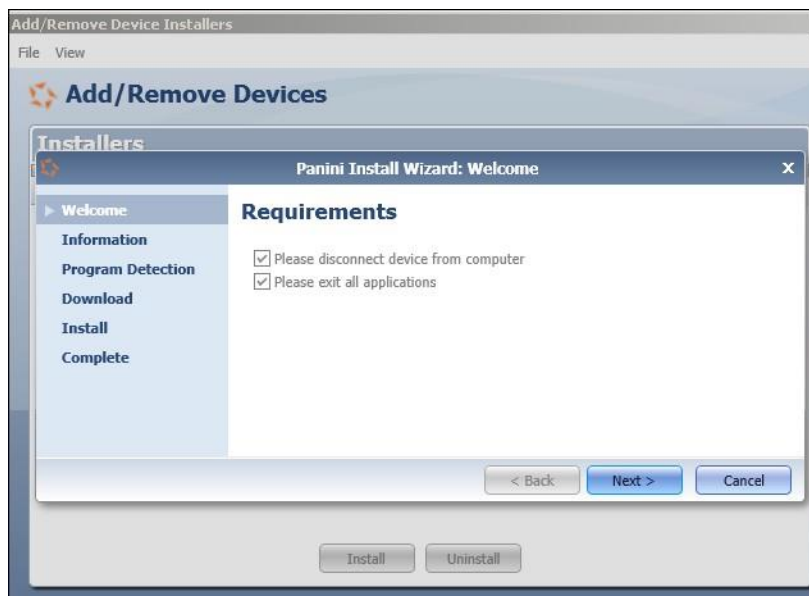


FIGURE 23 - INSTALL WIZARD

- After the *Install Wizard* tool has run its course, connect the scanner to your computer and select **Finish**. The scanner is now installed, and you may begin scanning deposits.

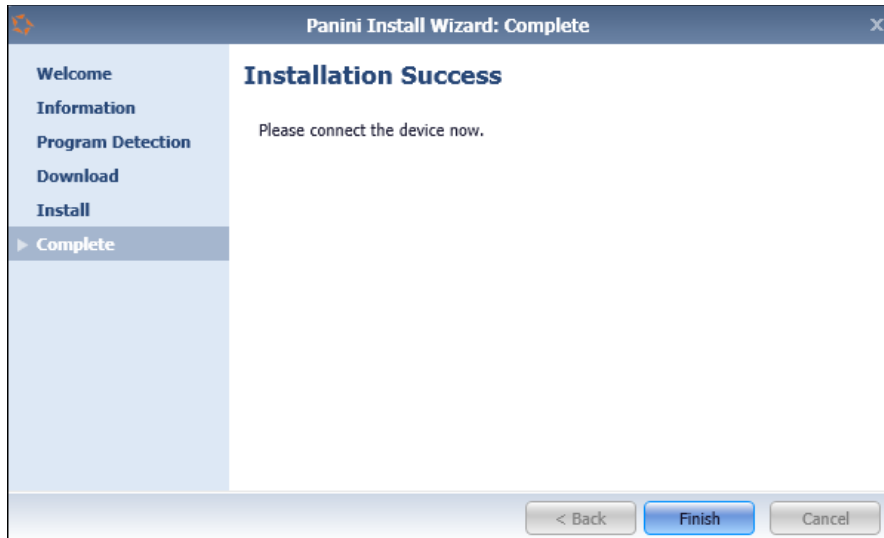


FIGURE 24 - INSTALLATION COMPLETE

NOTE: For more information about working with Device Control, including uninstalling a scanner, please see the “Scanner Device Control” section of this document.

Working with Remote Deposit Complete

A deposit can be in any number of statuses when it enters the system. The table below lists the potential status of any one transaction within the system.

Status	Definition
Approved	The transaction has been verified and will be processed at the designated cut-off time.
Processed	The transaction has been transmitted to the appropriate network (ACH or Check 21). Changes can no longer be made, and the transaction can no longer be voided.
Collected	(ACH Only) The transaction, originally returned NSF, has been re-presented to the Federal Reserve by ProfitStars, and funds were recovered.
Awaiting Capture	Status for credit card transactions only.
Awaiting Approval	The transaction has been verified, but the amount of the transaction exceeded the <i>Dual Authorization</i> limit of the user who created it. An authorized approver must review and either approve or void the transaction.
Declined	The transaction has been declined by the EPS system and will not be processed. The transaction exceeded either <i>Dual Authorization</i> or <i>Velocity</i> limits.
Voided	The transaction has been voided and will not be processed. A transaction may not be voided once the item is in the <i>Processed</i> status.
Error	An internal error has occurred within the EPS system. Contact your first line of support.
In Collection	(ACH Only) The transaction, returned NSF, is in the process of being re-presented to the Federal Reserve by ProfitStars.
In Research	May be used by your support group.
Uncollected NSF	(ACH Only) The transaction was returned to ProfitStars NSF by the Federal Reserve, and funds could not be recovered.
Suspended	The transaction has been verified but has exceeded <i>Velocity</i> limits.
Disputed	(ACH Only) The transaction was returned to ProfitStars by the Federal Reserve because the account holder at the receiving financial institution has disputed its validity. The transaction will be charged back (reversed).

Status	Definition
Invalid/Closed Account	(ACH Only) The transaction was returned to ProfitStars by the Federal Reserve because the account number at the receiving financial institution was invalid or because the account was closed.
Resolved	The transaction has been moved into a <i>Resolved</i> status by a user to indicate that no further action related to the transaction is required. Transactions can be moved into a <i>Resolved</i> status from a status of <i>Declined</i> , <i>Voided</i> , <i>Invalid/Closed Account</i> , <i>Disputed</i> , <i>Uncollected NSF</i> , <i>Error</i> , or <i>In Research</i> .

Detecting Duplicate Items

RDC has the capability to detect duplicate items with the following pieces of information for each item:

- Routing number
- Check number
- Account number

All three pieces of information must be present in order for duplicate detection to function properly. However, some items may be missing one of these requirements. For example, money orders or temporary checks may not include a serial/check number. These situations, as well as the erroneous parsing of an item, may cause an item to be inaccurately flagged as a duplicate.

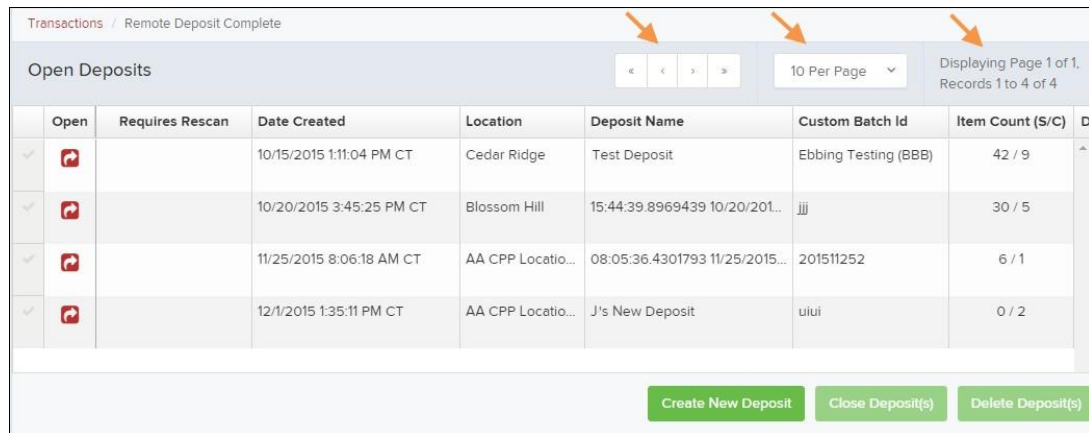
In addition, duplicate items may be flagged for a Transaction Number issue. The Transaction Number is systematically assigned to each transaction. If the *Transaction Number* field is manually populated by the user, however, the value *must* be unique per transaction and cannot be repeated. Repeating data in the *Transaction Number* field will result in a duplicate error.

If you have an instance which may produce occurrences of inaccurately detected duplicate items, please contact EPS Support at epssupport@profitstars.com or 877-542-2244.

The Open Deposits Page

1. Log in to the application, and select **Transactions** from the left main menu.
2. Under *Check Processing*, select **Remote Deposit Complete**.
3. The *Open Deposits* page displays. There may be times when multiple batches will be listed. The following features can prove helpful in navigating through deposit items. Note that these deposits on the *Open Deposits* page have not yet been submitted, but are still open.
 - **Navigational Paging** – Use the forward and backward arrows to navigate pages with lists of deposits. You may also select a page number to navigate directly to that page.

- **Per Page size** – Indicate how many deposits you would like to have listed on each page.
- **Displaying Page prompt** – The current page number and number of records in the deposit is displayed.
- **Sorting** – Select a column header to organize information in either ascending order (upward arrow) or descending order (down arrow)
- **Requires Rescan Column** – Displays a Yes or No value to indicate if the item in question needs to be rescanned. Selecting this column header will immediately group items that need to be rescanned.
- **Custom Batch ID** – If displayed, this column will show the unique value for each deposit and may be configurable.



Open	Requires Rescan	Date Created	Location	Deposit Name	Custom Batch Id	Item Count (S/C)	D
<input checked="" type="checkbox"/>		10/15/2015 1:11:04 PM CT	Cedar Ridge	Test Deposit	Ebbing Testing (BBB)	42 / 9	*
<input checked="" type="checkbox"/>		10/20/2015 3:45:25 PM CT	Blossom Hill	15:44:39.8969439 10/20/201...	jjj	30 / 5	
<input checked="" type="checkbox"/>		11/25/2015 8:06:18 AM CT	AA CPP Locatio...	08:05:36.4301793 11/25/2015...	201511252	6 / 1	
<input checked="" type="checkbox"/>		12/1/2015 1:35:11 PM CT	AA CPP Locatio...	J's New Deposit	ulul	0 / 2	

FIGURE 25 - OPEN DEPOSITS PAGE

NOTE: Should you navigate away from the *Open Deposits* page with deposits still open, the system will prompt you to confirm navigating away from the *Open Deposits* page.

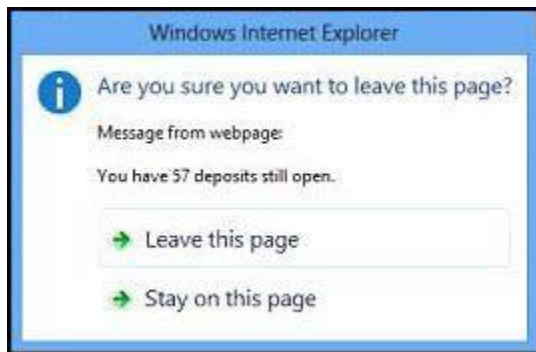


FIGURE 26 - CONFIRMATION TO LEAVE OPEN DEPOSITS PAGE





Creating a New Deposit

1. From the *Open Deposits* page, select **Create New Deposit**.

Transactions / Remote Deposit Complete

Open Deposits

10 Per Page Displaying Page 1 of 1, Records 1 to 4 of 4

	Open	Requires Rescan	Date Created	Location	Deposit Name	Custom Batch Id	Item Count (S/C)	D
<input checked="" type="checkbox"/>			10/15/2015 1:11:04 PM CT	Cedar Ridge	Test Deposit	Ebbing Testing (BBB)	42 / 9	
<input checked="" type="checkbox"/>			10/20/2015 3:45:25 PM CT	Blossom Hill	15:44:39.8969439 10/20/201...	jjj	30 / 5	
<input checked="" type="checkbox"/>			11/25/2015 8:06:18 AM CT	AA CPP Locatio...	08:05:36.4301793 11/25/2015...	201511252	6 / 1	
<input checked="" type="checkbox"/>			12/1/2015 1:35:11 PM CT	AA CPP Locatio...	J's New Deposit	uiui	0 / 2	



[Create New Deposit](#)
[Close Deposit\(s\)](#)
[Delete Deposit\(s\)](#)

FIGURE 27 - OPEN DEPOSITS PAGE WITH CREATE NEW DEPOSIT INDICATED

- If at this time Device Control has not already launched, the system will ask you to confirm launching Device Control. Select **OK** to continue.



FIGURE 28 - PROMPT TO LAUNCH DEVICE CONTROL

- The *New Deposit* page displays. Complete the following fields as applicable:
 - Location:** Select the account for which the batch is to be processed.
 - Payment Type:** Select how the item was received, for example, **Mailed In**.
 - Deposit Name:** System-generated. Includes the date and time the batch is being created along with a unique batch ID number.
 - Custom Batch ID:** If displayed, this is a required field that needs to be a unique value each time.
 - Number of Checks:** Enter the number of checks in the batch.
 - Total Amount:** Enter the total amount of the batch. This is a two-decimal-place field, to include the decimal point. For example, \$XX.XX.
 - Deposit Slip ID #:** If displayed, enter your assigned deposit slip ID.
 - Scanner Terminal #:** This field will automatically populate from the Device Control.

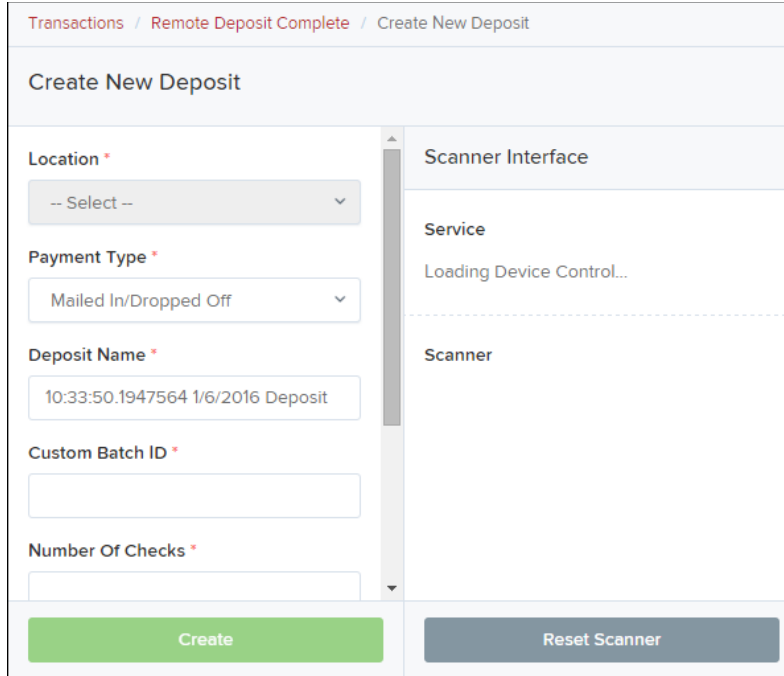


FIGURE 29 - CREATE NEW DEPOSIT PAGE

NOTE: In the *Scanner Interface* section of the page, the system will automatically check for an installed scanning device. If the scanning device is not plugged in, connect the scanner, and select the **Reset Scanner** option.

- a. If you have a multi-feed scanner, load the check item(s) into the scanner and select **Create**. The *Deposit View* page will display (see next section), with the check item(s) displayed as they are scanned.
- b. If you have a single-feed scanner, select **Create** and feed the check(s) into the scanner one at a time. The items will display on the *Deposit View* page as they are scanned.

The Deposit View Page

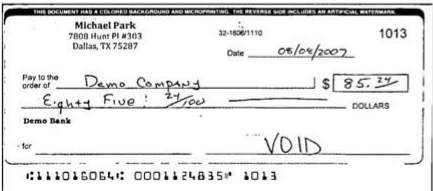
Once RDC and your scanner have begun scanning checks, the results will appear on the *Deposit View* page. This page is one of two available to manage your deposit before it is submitted for processing. The second page, the *Data Entry View* page, is covered in further detail in the next section, “The Data Entry View Page.”

Transactions / Remote Deposit Complete / Deposit View

« 1 » 10 Per Page Displaying Page 1 of 1, Records 1 to 6 of 6 All Items Refresh Data Entry View

Check	MICR	Customer Number	Name On Account	Deposit Amount	Ed
1	⑆ 11016064⑆ 0001124835⑆ 1013			\$85.24	
2	⑆ 11016064⑆ 0001124835⑆ 1013			\$85.24	
3	⑆ 11016064⑆ 0001124835⑆ 1013			\$85.24	
4	⑆ 11016064⑆ 0001124835⑆ 1013			\$85.24	
5	⑆ 11016064⑆ 0001124835⑆ 1013			\$85.24	

Front of Check Back of Check



Scanner Interface [Reset](#)

Service: Retrieving Items for Batch '3729490'.

Scanner: Connection To Device Control established

Terminal Number

Deposit Status

Location: AA CPP Location 1

Control: 1 / \$1.00

Scanned: 6 / \$511.44

[Complete Deposit](#)

FIGURE 30 - DEPOSIT VIEW PAGE

NOTE: Red question marks or yellow highlighted areas on this page may indicate there was a system difficulty in reading MICR line items, or that a manual key entry is required for a check. Keying and balancing and MICR repair will take place once this has been closed and submitted for processing.

Once a deposit has been opened, the following features are available under the *Deposit View* tab from the top of the page.

- **Refresh** - If at any time the *Amount* values for the check items do not immediately display, select the **Refresh** option to have values display.

Transactions / Remote Deposit Complete / Deposit View

« 1 » 10 Per Page Displaying Page 1 of 1, Records 1 to 6 of 6 All Items Refresh Data Entry View

Check	Alerts	MICR	Customer Number	Name On Account	Deposit Amount
1		⑆ 11016064⑆ 0001124835⑆ 1013	[Multiple]		\$85.24

FIGURE 31 - REFRESH OPTION

- **Multiples of Customer Data** – The system will detect repeated customer information from check items and display a *Multiple* status under the *Customer Number* column. Double-clicking the *Multiple* status will navigate you to the *Data Entry View* page. For more information about this page, please see “The Data Entry View Page” section of this document.

Transactions / Remote Deposit Complete / Deposit View

Displaying Page 1 of 1, Records 1 to 6 of 6

Check	Alerts	MICR	Customer Number	Name On Account	Deposit Amount
1		⑆ 0001 248354 ⑆ 0000 ⑆	[Multiple]		\$85.24

FIGURE 32 - MULTIPLE CUSTOMER RECORDS STATUS

- Item List Filter – Organize deposits by All Items, Problematic Items, and Needs Attention Items.

Transactions / Remote Deposit Complete / Deposit View

< 1 >
 10 Per Page
 Displaying Page 1 of 1, Records 1to 6 of 6
 All Items
 Refresh
 Data Entry View

Check	Alerts	MICR	Line On Account	Deposit Amount
1		⑆000124835⑆		\$85.24

FIGURE 33—ITEM LIST FILTER

- Amount status of *To Be Keyed* – The amount field entry will be performed by EPS Keying & Balancing once the deposit is submitted for processing.
- Scroll right of the listed items to see the **Edit**, **Delete**, and **Rescan** options available.

Transactions / Remote Deposit Complete / Deposit View

< < 1 2 3 > >
 10 Per Page
 Displaying Page 1 of 5, Records 1 to 10 of 42
 All Items
 Refresh
 Data Entry View

Check	Customer Number	Name On Account	Deposit Amount	Edit	Delete	Rescan
1	84d56fcf-a22e-408...	Ima Tester	\$85.24			
2			\$85.24			
3	949494	CUSTTEST	\$377.25			

FIGURE 34 - EDIT AND DELETE OPTIONS IN THE DEPOSIT VIEW TAB

NOTE: Selecting **Edit** will navigate you to the *Data Entry View* tab where alterations to the *Data Entry* fields can be made. Selecting **Delete** will present you with the option to delete an item and adjust the deposit amount (see below).

Delete Check

☒

Delete check without adjustments

☐

Delete check, decrement check count, and reduce the deposit total by:

\$

85.24

Cancel

Delete

FIGURE 35 - DELETE CHECK ADJUSTMENT OPTION

- Invalid MICR and rescanned required indicators – The system will have an indicator for a check with an invalid MICR or a faulty scan. Rescan the item(s) in order to submit the deposit.
- To rescan an item, select **Rescan** to the right of the item that needs rescanning.
 - A window will appear allowing you to rescan an item as needed. Place the check item in the scanner, and select the **Rescan** option in the window. The check will run through your scanner again.

Rescan Check

Place the replacement check in the scanner and press the Rescan button.

Front of Check

Back of Check

THIS DOCUMENT HAS A COLORED BACKGROUND AND MICROPRINTING. THE REVERSE SIDE INCLUDES AN ARTIFICIAL WATERMARK.

Michael Park
7808 Hunt Pl #303
Dallas, TX 75287

32-1606/1110

1013

Pay to the order of Demo Company

Eighty Five : 24/100

05/04/2007

85.24

DOLLARS

VOID

111016064: 0001124835 1013

o1115o t111016064t 000295282o

Cancel

Rescan

FIGURE 36 - RESCAN CHECK WINDOW

- Alerts – If a particular check item has been scanned before, it will appear as a duplicate in the item list. RDC will not submit duplicate items for processing. An Icon will also be presented in the Alerts column if the item has an invalid MICR.

Transactions / Remote Deposit Complete / Deposit View

« < 1 2 3 > » 10 Per Page Displaying Page 2 of 5, Records 11 to 20 of 42 All Items Refresh Data Entry View



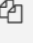

Check	Alerts	MICR	Customer Number	Name On Account	Deposit Amount
11		⑆ 111016064⑆ 0001124835⑆ 1013			\$85.24
12		⑆ 111016064⑆ 000295282⑆	{96ae9487-d389-4e...	Joe Smith	\$85.24
13		⑆ 111016064⑆ 000295282⑆	{96ae9487-d389-4e...	Joe Smith	\$281.04
14		⑆ 111016064⑆ 000110335⑆ 1016	{f281c61d-b507-496...	Jlm Smith	\$45.91

FIGURE 37 - DUPLICATE MICR INDICATOR IN ITEM LIST

Transactions / Remote Deposit Complete / Deposit View


« < 1 > » 10 Per Page Displaying Page 1 of 1, Records 1 to 1 of 1 All Items Refresh Data Entry View

Check	Alerts	MICR	Customer Number	Name On Account	Deposit Amount
1		⑆ 111016064⑆ 000???2483445⑆ 1073			\$85.24

- Select the **Front of Check** or **Back of Check** options near the check image to show the respective front and back images of the check created by the scanner you have installed (see figure below). Under the *Deposit Status* section, the *Scanned* field presents the number of items as they are scanned. The total amount of all items displays when the deposit is complete.

NOTE: In the *Scanner Interface* section, the *Terminal #* for the scanner installed will display as a reference.

Front of Check Back of Check ←



Scanner Interface	Reset	Deposit Status
Service		Location
Scanner		Control
Terminal Number		Scanned

Complete Deposit

FIGURE 38 - FRONT/BACK VIEWING OPTIONS FOR A CHECK IMAGE

- The **Complete Deposit** option is located at the bottom of the page. When you have finished scanning, select this option to begin the submission process.

NOTE: It is recommended that you enter information about this deposit on the *Data Entry View* page, described in the next section of this document. The **Complete Deposit** option is available on either of these pages.


Front of Check		Back of Check		Scanner Interface	Deposit Status
				Service	Location
				Scanner	Control
				Terminal Number	Scanned

FIGURE 39 - DEPOSIT STATUS SECTION, WITH COMPLETE DEPOSIT OPTION

- Near the top of the page, select the **Data Entry View** option to enter additional information about a customer and/or the transaction.

Transactions / Remote Deposit Complete / Deposit View

« < 1 **2** 3 > » 10 Per Page ▼ Displaying Page 2 of 5,
Records 11 to 20 of 42 All Items ▼ Refresh Data Entry View

Check	Alerts	MICR	Customer Number	Name On Account	Deposit Amount
11		* 1 1 1 0 1 6 0 6 L * 0 0 0 1 1 2 4 8 3 5 * 1 0 1 3			\$85.24
12		* 1 1 1 5 * * 1 1 1 0 1 6 0 6 L * 0 0 0 2 9 5 2 8 2 *	[96ae9487-d389-4e...	Joe Smith	\$85.24
13		* 1 1 1 5 * * 1 1 1 0 1 6 0 6 L * 0 0 0 2 9 5 2 8 2 *	[96ae9487-d389-4e...	Joe Smith	\$281.04
14		* 1 1 1 0 1 6 0 6 L * 0 0 0 1 1 0 1 3 3 5 * 1 0 1 6	[f281c61d-b507-496...	Jlm Smith	\$45.91

FIGURE 40 - DATA ENTRY VIEW TAB

The Data Entry View Page

Select the *Data Entry View* page once checks have been scanned to enter more information about them. When a check is scanned, the following fields will be automatically populated: *MICR*, *Payment Origin*, and *Amount*.

Transactions / Remote Deposit Complete / Data Entry View

Deposit View

Check 12 of 42

MICR: o1115o 1111016064t 000295282o

Payment Origin: Back Office

Amount: \$85.24

Name On Account: Joe Smith


Transaction ID00 *: 111

Trans Data 1 *:

Trans Data 2 *:

Trans Data 3 *:

Front of Check Back of Check



Customer

Customer Number: (96ae9487-d389-4e30-8eb9-2f0d4ce459fb)

Customer Data 1:

Customer Data 2:

Customer Data 3:

Customer Type: Individual

First Name: Joe

Last Name: Smith

Address:

Suite/APT#:

Scanner Interface

Service:

Scanner:

Terminal Number:

Deposit Status:

Location: Cedar Ridge

Control: 9 / \$7,718.96

Scanned: 42 / \$6,369.92

Complete Deposit

FIGURE 41 - DATA ENTRY VIEW TAB, INITIAL VIEW

The following fields, listed in alphabetical order, may be available on the *Data Entry View* page. Certain fields will appear in accordance with your Remote Deposit Complete settings.

NOTE: You may request up to three additional custom-labeled Transaction and/or Customer fields to be entered. These fields can be either optional or required. Request additional fields with an inquiry to your financial institution.

Status	Definition
Account Number	A required field that lists the account number to be debited.
Address	Contains the mailing address of the customer. This field will repopulate the next time a check from the same customer is scanned. This information is not available to appear on reports.
Amount	The dollar amount of the item as a two-decimal-place number. For example, XX.XX.
Check Number	The check serial number, viewed in the <i>Transaction Details</i> page and on the <i>Deposits Results</i> report. This is a required field.
City	Contains the city where the customer resides. This field will repopulate the next time a check or credit card from the same customer is scanned. This field does not appear on reports.

Status	Definition
Company Name	This field replaces the Last Name field when the Customer Type is set to Business . This field will repopulate the next time a check or credit card from the same customer is scanned, and users can search by this field. This field does not appear on reports.
Country	This field contains the country where the customer resides and will repopulate the next time a check or credit card from the same customer is scanned. This field does not appear on reports.
Customer Number	This field must be unique for each customer. It will repopulate the next time a check or credit card from the same customer is scanned. This field is available to appear on reports, and users can search by this field to populate personal information when this customer makes a deposit in the future.
Customer Type	This is a required field that defaults to Individual . This field can be changed to Business depending on the type of customer.
Daytime Phone	This field contains the customer's daytime phone number. It will repopulate the next time a check or credit card from the same customer is scanned. This field does not appear on reports.
Deposit Name	This field contains the time, unique deposit ID, and date for the deposit. This field can be changed by the user to contain a unique deposit name, if desired.
Description	This field is informational and does not appear on reports, but will appear on the <i>Transaction Details</i> page.
Driver's License	This field contains the driver's license number of the customer. This field will repopulate the next time a check or credit card from the same customer is scanned. This field does not appear on reports.
Email Address	This field contains the email address of the customer. It will repopulate the next time a check or credit card from the same customer is scanned. This field will not appear on reports.
Evening Phone	This field contains the customer's evening phone number. It will repopulate the next time a check or credit card from the same customer is scanned. This field does not print on reports.
Fax Number	This field contains the customer's fax number. This field will repopulate the next time a check or credit card from the same customer is scanned. This field does not appear on reports.
Federal Tax ID No.	This field replaces the <i>Social Security No.</i> field when the <i>Customer Type</i> field is set to Business . It will repopulate the next time a check or credit card from the same customer is scanned. This field does not appear on reports.

Status	Definition
First Name	This field contains the customer's first name and will repopulate the next time a check or credit card from the same customer is scanned. This field does not appear on reports.
Last Name	This field contains the customer's last name and will repopulate the next time a check or credit card from the same customer is scanned. Users can search by this field. This field does not appear on reports.
Location	This field contains the account to be debited/credited with the payment. This is a required field.
Name on Account	This field contains the name of the person from whom the item was received or the actual name used on the credit card or bank account. This field will repopulate the next time a check or credit card with the same account information is scanned and will appear on reports.
Number of Checks	This field contains the number of checks in the deposit to be scanned.
Payment Origin	<p>This field is required if displayed and shows a value based on input from the <i>Payment Type</i> field from the <i>New Deposit</i> page. It will contain one of the following:</p> <ul style="list-style-type: none"> • Internet • Telephone IVR • Telephone Operator • Mailed-In • Drop Box • Signature Faxed • Signature Original • Retail/Point of Purchase Sale • Back office • Corporate Trade Exchange
Routing Number	This field contains the ABA (American Bankers Association) number of the bank where the account is located. This is a required field and is validated.
Social Security No.	This field contains the Social Security Number of the customer. This field will repopulate the next time a check or credit card from the same customer is scanned. This field does not appear on reports.
State	This field contains the state from which the customer's driver's license was issued. This field will repopulate the next time a check or credit card from the same customer is scanned. This field does not appear on reports.
Suite/Apt. #	This field contains the suite or apartment number of the customer. This field will repopulate the next time a check or credit card from the same customer is scanned. This field does not appear on reports.

Status	Definition
Total Amount	This field displays the total dollar amount of the deposit being scanned.
Transaction ID	This field must be unique for each transaction processed. It will be automatically populated if left blank and will appear on reports.
Zip/Postal	This optional key entry field contains the zip code or postal code of your customer and will repopulate the next time a check from the same customer is scanned. This field is not available to appear on reports.

- Fill in the informational fields, as needed. If you need to **Edit** a customer's information, **Add** information to create a new customer, or to **Search** for a different customer to associate with the deposit item, select the appropriate option under the *Customer* panel. Please note that data validation on phone numbers is available when entering information.

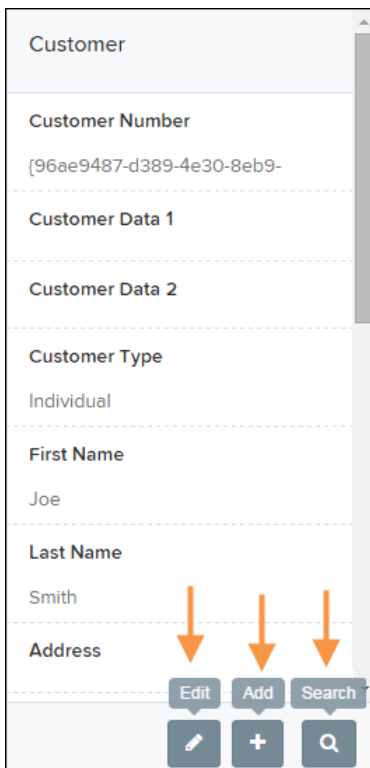


FIGURE 42 - CUSTOMER EDIT, ADD, AND SEARCH OPTIONS

NOTE: Information entered on either the *Data Entry View* tab or *Deposit View* tab will save automatically when navigating to the other tab. If you will be processing check items from recurring customers, you will be able to populate existing customer data.

The following fields can be used to generate a customer record when entering data.

- Name on Account

- Customer Number
 - First Name
 - Last Name
 - Address
 - Daytime Phone
 - Evening Phone
- If there is more than one customer record available based on the check's information the indicator **Multiple** will appear under the *Customer Number* column. Double-click the **Multiple** indicator to navigate to *Data Entry View* page and specify a customer in the *Customer* column.

[illegible]

FIGURE 43 - SELECTING A CUSTOMER

Customer

More than one customer was found for this account.

Multiple Matches - Select Customer

Customer Number

ran-456

Name

First Last

Phone

Customer Number

ran-321

Name

Company

Phone

123-456-7890 123

Customer Number

ran-123

Name

First Last

Phone

123-456-7890 123

Customer Number

ran-654

Name

First Last

Phone

FIGURE 44 - SELECTING A CUSTOMER

- When you are ready to submit the deposit, from either the *View Deposit* tab or *Data Entry View* tab, select **Complete Deposit**. The system will return to the *Open Deposits* page.

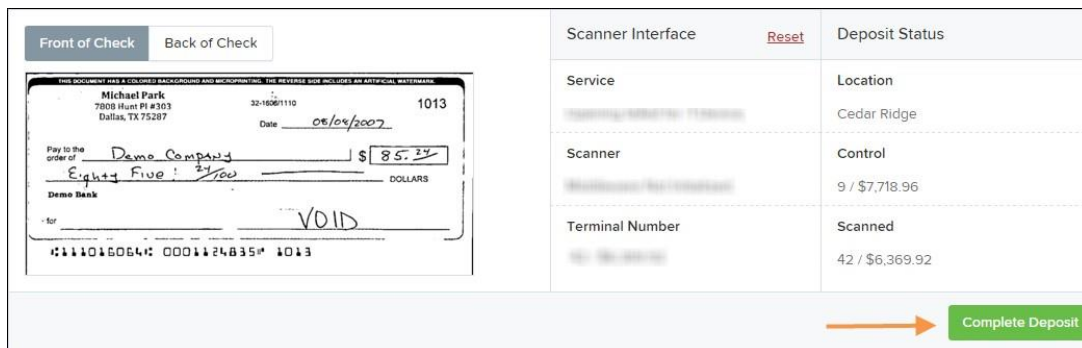


FIGURE 45 - COMPLETE DEPOSIT OPTION

Adding to a Deposit




- Log in to the system, and select **Transactions** from the left main menu.
- Under *Check Processing*, select **Remote Deposit Complete**.
- The *Open Deposits* page will appear. Under the **Open** column, select an open icon to open a deposit.

Transactions / Remote Deposit Complete

Open Deposits

10 Per Page

Displaying Page 1 of 1. Records 1 to 4 of 4

	Open	Requires Rescan	Date Created	Location	Deposit Name	Custom Batch Id	Item Count (S/C)	Deposit Amount (S/C)
✓			10/15/2015 1:11:04 PM CT	Cedar Ridge	Test Deposit	E Testing (BBB)	42 / 9	\$6,369.92 / \$7,718.96
✓			10/20/2015 3:45:25 PM CT	Blossom Hill	15:44:39.8969439 10/20/201...	jjj	30 / 5	\$4,796.43 / \$5,500.00
✓			11/25/2015 8:06:18 AM CT	AA CPP Location 1	08:05:36.4301793 11/25/2015...	201511252	6 / 1	\$511.44 / \$1.00

Create New Deposit Close Deposit(s) Delete Deposit(s)

- The open deposit will appear. Place the additional check item(s) to be deposited in your scanner. The check(s) will scan and the added amount displayed.

NOTE: If the amount of the additional check(s) you scanned are not displayed automatically, select the **Refresh** option at the top of the page.

Closing Deposits for Processing

It is recommended that each deposit be closed as soon as a user has completed scanning and entering data. However, a deposit can be submitted for processing at a later time.





NOTE: It is recommended that merchants submit deposits at least one hour before their financial institution's cut off time, in the event a batch needs attention.

1. From the *Open Deposits* page, select the check box next to the **Open** column for each deposit you wish to close.

Transactions / Remote Deposit Complete

Open Deposits

10 Per Page | Displaying Page 1 of 1, Records 1 to 4 of 4

Open	Requires Rescan	Date Created	Location	Deposit Name	Custom Batch Id	Item Count (S/C)	Deposit Amount (S/C)
<input checked="" type="checkbox"/>		10/15/2015 1:11:04 PM CT	Cedar Ridge	Ebbing Test Deposit	Ebbing Testing (BBB)	42 / 9	\$6,369.92 / \$7,718.96
<input checked="" type="checkbox"/>		10/20/2015 3:45:25 PM CT	Blossom Hill	15:44:39.8969439 10/20/201...	jjj	30 / 5	\$4,796.43 / \$5,500.00
<input checked="" type="checkbox"/>		11/25/2015 8:06:18 AM CT	AA CPP Location 1	08:05:36.4301793 11/25/2015...	201511252	6 / 1	\$511.44 / \$1.00
<input checked="" type="checkbox"/>		12/1/2015 1:35:11 PM CT	AA CPP Location 1	Jennie's New Deposit	uiui	0 / 2	\$0.00 / \$100.55

Create New Deposit | Close Deposit(s) | Delete Deposit(s)





FIGURE 46 - SELECTING DEPOSITS

2. Select **Close Deposit(s)** from the bottom of the page.

Transactions / Remote Deposit Complete

Open Deposits

10 Per Page | Displaying Page 1 of 1, Records 1 to 4 of 4

Open	Requires Rescan	Date Created	Location	Deposit Name	Custom Batch Id	Item Count (S/C)	Deposit Amount (S/C)
<input checked="" type="checkbox"/>		10/15/2015 1:11:04 PM CT	Cedar Ridge	Ebbing Test Deposit	Ebbing Testing (BBB)	42 / 9	\$6,369.92 / \$7,718.96
<input checked="" type="checkbox"/>		10/20/2015 3:45:25 PM CT	Blossom Hill	15:44:39.8969439 10/20/201...	jjj	30 / 5	\$4,796.43 / \$5,500.00
<input checked="" type="checkbox"/>		11/25/2015 8:06:18 AM CT	AA CPP Location 1	08:05:36.4301793 11/25/2015...	201511252	6 / 1	\$511.44 / \$1.00
<input checked="" type="checkbox"/>		12/1/2015 1:35:11 PM CT	AA CPP Location 1	Jennie's New Deposit	uiui	0 / 2	\$0.00 / \$100.55

Create New Deposit | Close Deposit(s) | Delete Deposit(s)

FIGURE 47 - CLOSE DEPOSIT(S) OPTION

3. The system will ask you to confirm closing your selected deposit(s). Select **Close** to confirm closing the deposit(s).

Confirm Deposit(s) Close

Are you sure you want to close the selected 2 deposit(s)?

Cancel | Close

FIGURE 48 - CONFIRMATION TO CLOSE DEPOSIT(S)

- The results of the deposit display. Choose **OK** to dismiss the message.

NOTE: If you attempt to close a deposit with items that need rescanning, specifically if the MICR of an item was not read correctly, the system will not deposit that item.

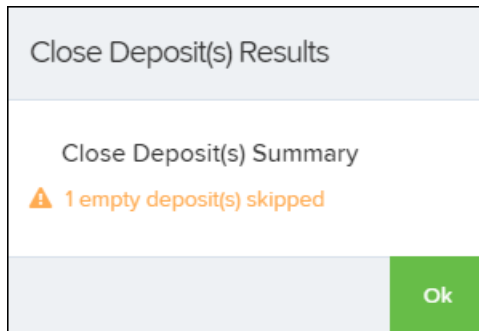
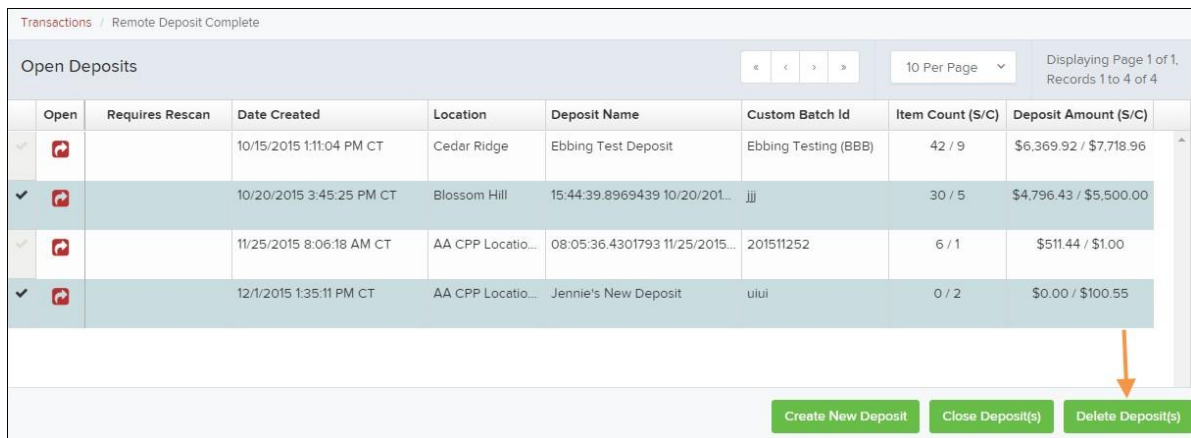


FIGURE 49 - DEPOSIT ERROR MESSAGE

Deleting a Deposit

A deposit can be deleted as soon as it has completed scanning, or at a later time.

- From the *Open Deposits* page, select the check box next to the deposit(s) you wish to delete.



- Select **Delete Deposit(s)**. The system will ask you to confirm deleting a deposit. Select **Delete**.

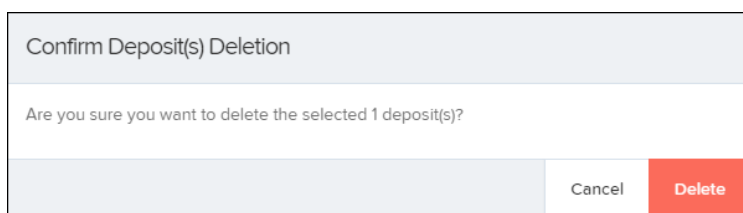


FIGURE 50 - DELETE DEPOSIT(S) OPTION

3. A confirmation of the deletion will display. Select **OK** to continue to the *Open Deposits* page.

Notifications

Notifications are used by the Remote Deposit Complete application to let users know when a deposit's MICR repair, CAR/LAR, keying, and/or balancing steps have been completed, as well as the status of the deposit. The *Deposit Results* report assists with determining item(s) that need further attention.

An email is sent to the user who created the deposit along with any other designated interested parties. A notification will inform the user of the following situations:

- The deposit was approved without any errors.
- The deposit was approved with adjustments.
- The deposit was rejected.
- An item needs rescanning.
- There are duplicate items in the deposit.
- There are rejected items in the deposit.



FIGURE 51 - SAMPLE REMOTE DEPOSIT COMPLETE NOTIFICATION

A deposit will be reopened if there are items that need to be rescanned. When this occurs, the user will need to correct the deposit and resubmit it for processing.

The following table describes the status of any one deposit in the system.

Status	Definition
Deleted	The entire deposit has been deleted by someone in your organization prior to closing it. The deposit may not be deleted once it has been closed. None of the items will be sent to transaction processing.
Deposited	All items have been processed successfully, and the deposit is in balance with no discrepancies or errors. These items are now in the <i>Approved</i> status, and an email notification has been sent.

Status	Definition
Deposited with Adjustment	One or more of the items within this deposit caused an adjustment to the total deposit amount. The transactions have been sent to transaction processing with the adjusted deposit amount. An email notification has been sent.
Open for Scanning	A deposit has been created and is open to scan. Items can be scanned into this deposit until it is closed.
Partial Deposit	One or more of the items was removed from the deposit due to a duplicate or rejected item. The deposit has been sent to transaction processing with the deposit total minus the items that will not be processed. An email notification has been sent.
Rejected	This deposit status indicates the entire deposit has been rejected. A deposit is rejected when the adjustment amount exceeds the adjustment limit assigned by the bank or when all items within the deposit are rejected possibly due to all being duplicates.
Submitted	This deposit status indicates the deposit has been closed and the items are being reviewed for accuracy and errors. Once finished, the status of the items will change to one of the statuses defined previously.

The Transaction Status Summary

When working with the Remote Deposit Complete application, it may be necessary to edit or void transactions made. This can only be done when a deposit has been submitted and transactions appear in the *Approved* status of the *Current Transaction Summary*. An approved transaction will move to the *Processed* status at the end of the closing day for your financial institution.

The *Current Transaction Summary* appears on the *Home* page of the application when logging in and shows the status of all transactions within the past 60 days. Select any one status from the *Current Transaction Summary* to generate a report for all the transactions within that status for the current day.

The following table lists the statuses within the *Current Transaction Summary*.

Status	Definition
Approved	The transaction has been verified and will be processed at the designated cut-off time.
Processed	The transaction has been transmitted to the appropriate network (ACH or Check 21). Changes can no longer be made, and the transaction can no longer be voided.
Collected	(ACH Only) The transaction, originally returned NSF, has been re-presented to the Federal Reserve by ProfitStars, and funds were recovered.
Awaiting Capture	Status for credit card transactions only.
Awaiting Approval	The transaction has been verified, but the amount of the transaction exceeded the <i>Dual Authorization</i> limit of the user who created it. An authorized approver must review and then either approve or void the transaction.
Declined	The transaction has been declined by the EPS system and will not be processed. The transaction exceeded either <i>Dual Authorization</i> limits or <i>Velocity</i> limits.
Voided	The transaction has been voided and will not be processed. A transaction may not be voided once the item is in the <i>Processed</i> status.
Error	An internal error has occurred within the EPS system. Contact your first line of support.
In Collection	(ACH Only) The transaction, returned NSF, is in the process of being re-presented to the Federal Reserve by ProfitStars.
In Research	May be used by your support group.

Status	Definition
Uncollected NSF	(ACH Only) The transaction was returned to ProfitStars NSF by the Federal Reserve, and funds could not be recovered.
Suspended	The transaction has been verified, but it has exceeded <i>Velocity</i> limits.
Disputed	(ACH Only) The transaction was returned to ProfitStars by the Federal Reserve because the account holder at the receiving financial institution has disputed its validity. The transaction will be charged back (reversed).
Invalid/Closed Account	(ACH Only) The transaction was returned to ProfitStars by the Federal Reserve because the account number at the receiving financial institution was invalid or because the account was closed.
Resolved	The transaction has been moved into a <i>Resolved</i> status by a user to indicate that no further action related to the transaction is required. Transactions can be moved into a <i>Resolved</i> status from a status of <i>Declined</i> , <i>Voided</i> , <i>Invalid/Closed Account</i> , <i>Disputed</i> , <i>Uncollected NSF</i> , <i>Error</i> , or <i>In Research</i> .

The below figure is an example of the *Transaction Status Summary* on the *Dashboard* page once you have logged in to the system.

Dashboard

Welcome

Wednesday, January 6, 2016

You are currently logged in to the SPP Demo online system.

News

12/14/2015

Testing

11/2/2015

Testing our priority news feature!

11/18/2015

SPB The new Merchant Portal Test

11/2/2015

Welcome to our new site!

Current Transaction Summary

This is a summary report of all transactions currently in the system as of 11/07/2015. All times are displayed in Central Time (CT).

Status	Items	Debits	Credits
Approved	18	\$6,177.50	\$73.00
Processed	352	\$20,465.48	\$1,161.00
Collected			
Awaiting Capture			
Awaiting Approval			
Declined	19	\$91,365,770.19	\$322.50
Voided	20	\$274.20	
Error	36	\$469.10	\$62.00
In Collection			
Other ACH Returns			
Uncollected NSF			
Suspended			
Disputed			
Invalid / Closed Account			
Resolved	123	\$155.00	\$17.00
Other Check21 Returns			

FIGURE 52 - CURRENT TRANSACTION SUMMARY

The *Transaction Status* report is a pre-defined report listing all transactions of a specific status. It is automatically generated when you select a status link from the *Current Transaction*

Summary. The list will contain items that have been processed within the last 60 days and give you access to individual transaction information and images of the scanned items. To generate this report, select a status that appears as a link and contains values in the *Current Transaction Summary*.

Editing Approved Transaction Amounts

1. Log in to the system, and select a status on the *Current Transaction Summary* that appears as a link and contains values. For example, select **Approved**.



Current Transaction Summary 			
This is a summary report of all transactions currently in the system as of 11/07/2015. All times are displayed in Central Time (CT).			
Status	Items	Debits	Credits
Approved 	18	\$6,177.50	\$73.00
Processed	352	\$20,465.48	\$1,161.00
Collected			
Awaiting Capture			
Awaiting Approval			
Declined	19	\$91,365,770.19	\$322.50
Voided	20	\$274.20	
Error	36	\$469.10	\$62.00
In Collection			
Other ACH Returns			
Uncollected NSF			
Suspended			
Disputed			
Invalid / Closed Account			
Resolved	123	\$155.00	\$17.00
Other Check21 Returns			

FIGURE 53 - CURRENT TRANSACTION SUMMARY WITH APPROVED STATUS INDICATED

2. A report with all *Approved* transactions generates. Notice the indication, **Approved**, in the *Status* column. Select the **View** link to the left of the transaction you wish to edit.

Transactions matching your query

Share to All Users

Title

Transaction Approved

Save to My Reports

Displaying Page 1 of 1
Records 1 - 18 of 18






View	Transaction Date	Status	Payment Type	Name On Account
	12/18/2015 10:24:26 AM CT	Approved	Checking	
	12/18/2015 10:42:20 AM CT	Approved	Checking	Ima Tester
	12/28/2015 2:10:12 PM CT	Approved	Checking	
	12/30/2015 10:50:00 AM CT	Approved	Checking	James Jones
	12/30/2015 10:50:00 AM CT	Approved	Checking	James Jones
		Total Debit Count	13	Total Credit Count 5
		Total Debit Amount	\$6,177.50	Total Credit Amount \$73.00

FIGURE 54 - VIEW OPTION FOR AN APPROVED TRANSACTION

- The *Transaction Details* page appears. Select the **edit** pencil next to the *Sale* value.

Reports / Results / Transaction Information			
Transaction Details		Actions	<input type="button" value="Show Events"/> <input type="button" value="Hide Events"/>
Customer (ID): Jones, James (99007789)	Transaction data 1 Displayed Label Text Field: 6		<input type="button" value="Show Audit History"/> <input type="button" value="Hide Audit History"/>
Effective Date: Tuesday, January 05, 2016			
Sale: \$17.00			
Payment Method: ACH	Transaction data 2 Displayed Label Text Field: 7		
From Account Type: Checking			
Account Number: 122037760 / 4560646556	transaction data 3 Displayed Label Text Field: 8		
To Location: Corporate Office			

FIGURE 55 - EDIT OPTION FOR APPROVED TRANSACTION

- The *Sale* amount will become a workable field where you can enter a new amount. Enter a new amount and a reason for changing the amount. Select the **save** link when finished.

Transaction Details

Customer (ID):

Jones, James (99007789)

Effective Date:

Tuesday, January 05, 2016

\$

17.00

Reason

Reason

✓

✕

FIGURE 56 - REASON FOR EDITING SALE AMOUNT AND EDITING CONFIRMATION OPTIONS

Editing Effective Dates

Some check items may have specific instructions about depositing, including a specific effective date. Other checks may need an effective date set to a future date if the deposit was made ahead of time.

1. From the *Transactions Details* page, select the **Edit** link next to the *Effective Date* field.

Reports / Results / Transaction Information

Transaction Details

Actions

Show Events

Hide Events

Customer (ID):

Jones, James (99007789)

Effective Date:

Tuesday, January 05, 2016

Sale:

\$17.00

Payment Method:

ACH

Transaction data 1

Displayed

6

Transaction data 2

Displayed

7

Show Audit History

Hide Audit History

FIGURE 57 - EDIT EFFECTIVE DATE OPTION

2. The *Effective Date* field will become a workable field where you can enter a new date. A calendar option appears for date selection, or you may type in a date in MM/DD/YYYY format. Enter a new date and the *Reason* for changing the effective date. Select the **save** link next to the *Effective Date* field when finished.

Transaction Details

Customer (ID): Jones, James (99007789)

Effective Date: 01/05/2016 Reason: Reason

✓ ✗

FIGURE 58 - REASON FIELD FOR EDITING EFFECTIVE DATE

Voiding Transactions

As a user working with Remote Deposit Complete, you may need to void a transaction that has been made. This can only be done when a deposit has been made and is in the *Approved* status, displayed on the *Current Transaction Summary* page once you have logged in. Recall that an approved transaction will moved to the *Processed* status at the end of the closing day for your financial institution.

1. From the *Transaction Details* page, select **Actions | Void**.

Reports / Results / Transaction Information

Transaction Details

Customer (ID): Jones, James (99007789)

Effective Date: Tuesday, January 05, 2016

Sale: \$17.00

Actions ▾

Mark this transaction void

Void

FIGURE 59 - TRANSACTION DETAILS PAGE WITH VOID TRANSACTION OPTION

2. The system will ask you to confirm voiding the transaction. Select **Void**. The transaction will be voided and appear as a *Voided* status on the *Current Transaction Summary* page until it is resolved.

Confirm Void

Are you sure you want to void the transaction with Reference Number - T:QNFR6CHFF1? This action cannot be undone.

Cancel Void

FIGURE 60 - CONFIRM VOID OPTION

Resolving Transactions

Resolving a transaction means indicating a reason why the transaction was voided for communication and auditing purposes. Once a transaction has been voided, it will appear in the Voiced status, where you can opt to resolve the transaction.

1. Log in to the application and select the **Voiced** status from the *Current Transaction Summary* on the *Dashboard* page of the application.



Current Transaction Summary 			
This is a summary report of all transactions currently in the system as of 11/07/2015. All times are displayed in Central Time (CT).			
Status	Items	Debits	Credits
Approved	18	\$6,177.50	\$73.00
Processed	352	\$20,465.48	\$1,161.00
Collected			
Awaiting Capture			
Awaiting Approval			
Declined	19	\$91,365,770.19	\$322.50
Voiced 	20	\$274.20	
Error	36	\$469.10	\$62.00
In Collection			
Other ACH Returns			
Uncollected NSF			
Suspended			
Disputed			
Invalid / Closed Account			
Resolved	123	\$155.00	\$17.00
Other Check21 Returns			

FIGURE 61 - VOIDED STATUS LINK

2. Select the **View** icon for the transaction you wish to resolve.




Transactions matching your query

☐ Share to All Users

Save to My Reports

Title Transaction Voiced

Displaying Page 1 of 1
Records 1 - 21 of 21






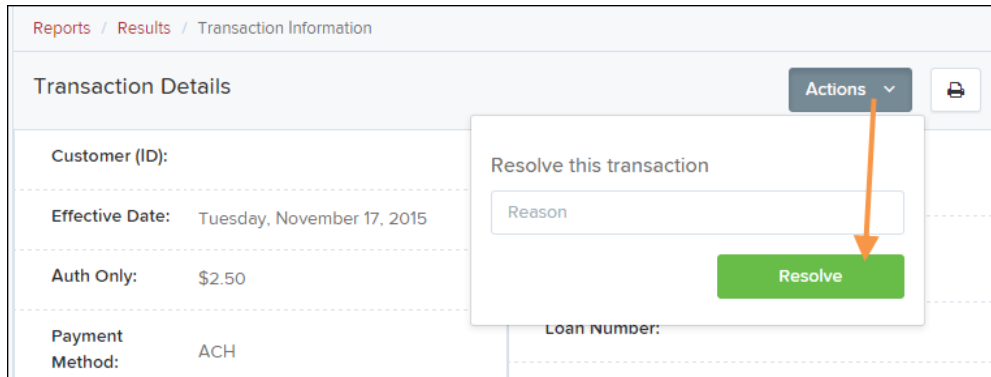
View	Transaction Date	Status	Payment Type	Name On Account
	11/16/2015 9:20:29 AM CT	Voided	Checking	
	11/16/2015 2:50:28 PM CT	Voided	Checking	Ben Jerry
	11/16/2015 2:57:59 PM CT	Voided	Checking	Ben Jerry

FIGURE 62 - VIEW ICON

- From the *Transaction Details* page, select **Actions**. Enter a reason for resolving the transaction. For example, the transaction was deposited in the wrong account. Select **Resolve**. The transaction will now appear under the *Resolved* status in the *Current Transaction Summary*.



Reports / Results / Transaction Information

Transaction Details

Customer (ID):

Effective Date: Tuesday, November 17, 2015

Auth Only: \$2.50

Payment Method: ACH

Loan Number:

Actions

Resolve this transaction

Reason

Resolve

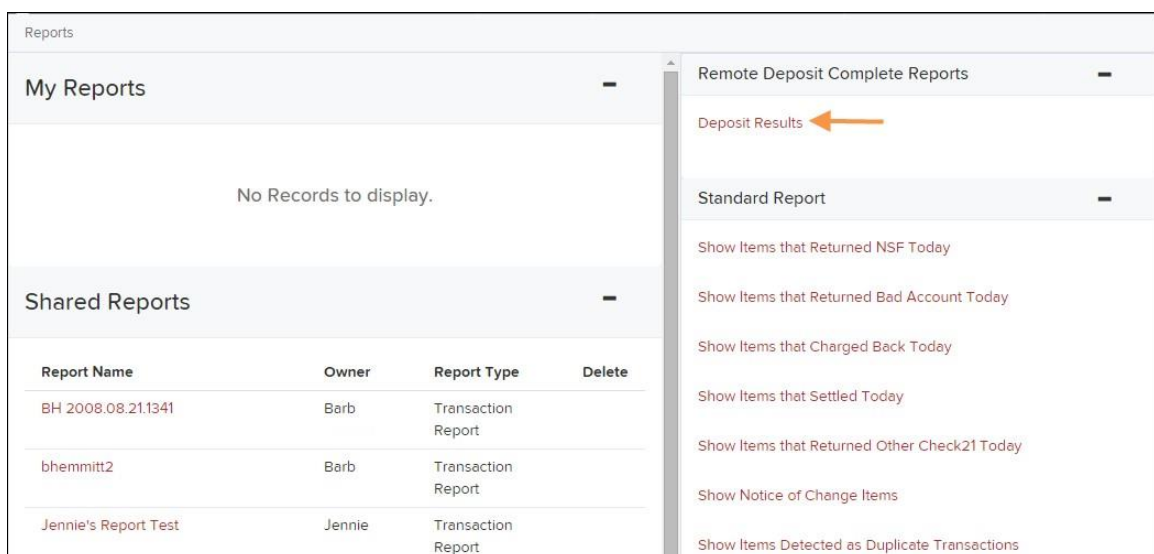
FIGURE 63 - MARK TRANSACTION RESOLVED OPTION

Deposit Results Report

The *Deposit Results* report displays a date range of deposit batches created with Remote Deposit Complete. This report can monitor the status of current-day batches, the items within a batch, or display a previous day's batches and items.

NOTE: Batches created using Remote Deposit Complete can represent a deposit or be part of a multi-batch deposit.

- Log in to the system, and select **Reports** from the left main menu.
- Under *Remote Deposit Complete Reports*, select **Deposit Results**.



Reports

My Reports

No Records to display.

Shared Reports

Report Name	Owner	Report Type	Delete
BH 2008.08.21.1341	Barb	Transaction Report	
bhemmitt2	Barb	Transaction Report	
Jennie's Report Test	Jennie	Transaction Report	

Remote Deposit Complete Reports

Deposit Results

Standard Report

Show Items that Returned NSF Today

Show Items that Returned Bad Account Today

Show Items that Charged Back Today

Show Items that Settled Today

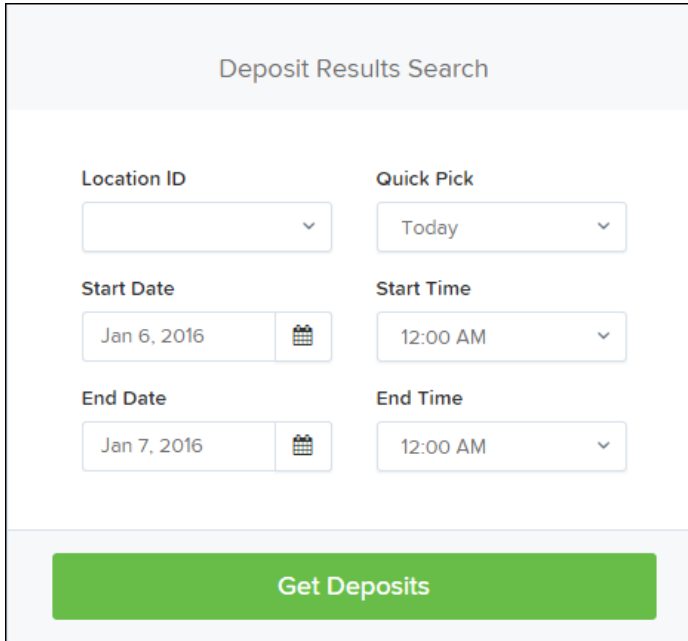
Show Items that Returned Other Check21 Today

Show Notice of Change Items

Show Items Detected as Duplicate Transactions

FIGURE 64 - REPORTS PAGE WITH DEPOSITS RESULTS OPTION

- Designate a *Location* for the report. Select a pre-defined date range for the report next to the *Quick Pick* option, or specify a **Start Date** and **End Date**.



The form is titled "Deposit Results Search". It contains several input fields:

- Location ID:** A dropdown menu.
- Quick Pick:** A dropdown menu with "Today" selected.
- Start Date:** A date picker showing "Jan 6, 2016".
- Start Time:** A dropdown menu with "12:00 AM" selected.
- End Date:** A date picker showing "Jan 7, 2016".
- End Time:** A dropdown menu with "12:00 AM" selected.

At the bottom of the form is a large green button labeled "Get Deposits".

FIGURE 65 - DEPOSIT RESULTS REPORT CRITERIA

- Select **Get Deposits**. A list of batches matching the filters displays.

The following table lists the data presented in the report in alphabetical order for quick reference.

Field	Definition
ACH Deposit Amount	The total amount of the ACH items in the batch/deposit.
ACH Deposit Count	The number of ACH items in the batch/deposit.
ACH Deposit Date	States the deposit date of the ACH items within the batch/deposit.
C21 Deposit Amount	States the total amount of the Check 21/Image Replacement Document (IRD) items in the batch/deposit.
C21 Deposit Count	The number of Check 21/Image Replacement Document (IRD) items in the batch/deposit.
C21 Deposit Date	The deposit date of the Check 21/IRD items.
Create Date	Contains the date the batch/deposit was scanned.
Custom Batch ID	If enabled, this field is required and will be reflected on the <i>Deposit Results</i> report. It will contain a unique label for a batch/deposit processed.

Field	Definition
Deposit Details	Contains a link to the list of steps the batch/deposit has taken and the user who processed the batch.
Deposit Slip ID#	If enabled, this field will reflect in the <i>Deposit Results</i> report. This field provides additional values to the virtual deposit slip (either predefined or optional, depending on your settings).
Deposit Status	The status of the entire batch/deposit at the time the report is generated.
Description	Contains the <i>Deposit Name</i> which is made up of the date and time the batch was created surrounding a unique system-assigned batch ID.
Item Details	Contains a link to the list of the individual checks that make up the batch/deposit and their respective statuses.
Location	Found on the <i>Deposit Results</i> report, this field contains the account (location) to be credited with the payment.
Received Amount	The amount of the deposit after review.
Received Count	The number of items identified in the deposit after review.
Total Deposit Amount	The total amount of the deposit.
Total Deposit Count	The total number of items in the deposit.
Your Amount	The amount entered when the batch/deposit was created.
Your Count	The number of items entered when the batch/deposit was created.





Deposits matching your search criteria							Displaying Page 1 of 1 Records 1 - 2 of 2				
Records Per Page							10				
Item Details	Deposit Details	Create Date	Location	Custom Batch Id	Batch Type	Description					
		12/1/2015	Location 1	uiui	Remote Deposit	. New Deposit					
		12/21/2015	Avalon Campbell	5646542	Remote Deposit	17:49:04.1335657 12/21/2015 ...					

FIGURE 66 - EXAMPLE DEPOSIT RESULTS REPORT

Viewing Transaction Details

1. From the *Deposit Results* page, select the icon under the *Item Details* column to view events about that transaction in the deposit.

Deposits matching your search criteria

Displaying Page 1 of 1 Records 1 - 2 of 2

Records Per Page 10





Item Details	Deposit Details	Create Date	Location	Custom Batch Id	Batch Type	Description
		12/1/2015	Location 1	uiui	Remote Deposit	.New Deposit
		12/21/2015	Avalon Campbell	5646542	Remote Deposit	17:49:04.1335657 12/21/2015 ...

FIGURE 67 - ITEM DETAILS OPTION

- The *Items in deposit* will appear. To view batch details, select the icon under the *Item Details* column.

Reports / Deposit Results / Item Details

Items in deposit J New Deposit

Displaying Page 1 of 1 Records 1 - 1 of 1



Item Details	Check Image	Sequence #	Item Date	Status	Customer Name	Routing / Account #	Check #	Amount	Deposit As
		1	12/1/2015	Rejected		111016064 / 0		\$85.24	/ NONE

FIGURE 68 - VIEW OPTION FOR AN ITEM IN DEPOSIT

The *Batch Item Details* page appears.

Reports / Deposit Results / Item Details / Batch Details

Batch Item Details	Show Events	Hide Events
Sequence #: 1		
Routing / Account #: 111016064 / 0		
Check #:		

FIGURE 69 - BATCH ITEM DETAILS PAGE

The following table describes the *Batch Item Details* available when viewing a transaction, listed in alphabetical order.

Field	Definition
Amount	The amount of the check after being reviewed. A value of \$0.00 signifies that the check was either rejected or a duplicate and will not be included in the batch/deposit total.
Amount Source	This field indicates whether a check needed special handling to determine the amount, the MICR line, etc. Values displayed are <i>Keyed</i> or <i>Read</i> .

Field	Definition
Check #	The serial number of the check taken from the MICR line.
Customer Name	The field contains the optional <i>Name on Account</i> data, if entered for the customer previously.
Deposit As	This field contains how the check will be processed—either as an ACH or Check 21 (IRD) transaction.
Deposit Item	This field contains the links to either view or print an image of the check, or view the specific automated steps the check has gone through or is in the process of going through.
Image Quality Pass	This field identifies whether a check image is good or not.
Item Date	This field contains the date the check was scanned.
Item Status	<ul style="list-style-type: none"> • Deposited – The item has processed through CAR/LAR, the proof function, and is part of a closed deposit. It has been sent to transaction processing for end-of-day processing at the designated cutoff time. • Error – The item has been sent to transaction processing, but an error occurred preventing the item from being processed. • Duplicate – The item was sent to transaction processing and rejected as a duplicate. The item will not be processed with this batch/deposit. • In Review – The item is awaiting MICR repair or amount entry, and its status will change once those steps are completed. • Needs Rescan – The item has a poor image quality or is a partial image. The batch/deposit will be re-opened so that you can rescan this item again in order for the batch/deposit to be processed. • Open – The item was scanned with no problems in an open deposit. Once the deposit status becomes <i>Deposited</i>, the item will be sent to transaction processing. • Rejected – Indicates the item has been rejected and will not be processed due to any number of reasons (e.g. image quality, invalid MICR, invalid payment origin, etc.).
Routing/Account #	This field contains the routing and transit number of the check captured when the MICR line was scanned.
Scanned Count	This field contains the number of times an item was scanned.
Sequence #	This field contains the sequence of the check within the batch/deposit.

- Select **Show Events** at the top of the page to display a record of events for this item.

Reports / Deposit Results / Item Details / Batch Details						
Batch Item Details				Show Events		Hide Events
Sequence #:	1	Event Date	Event	Application	User ID	User Name
Routing / Account #:	111016064 / 0	12/1/2015 3:30:43 PM CT	Rejected	Remote Batch Deposit	6964	
Check #:		12/1/2015 1:35:23 PM CT	CARReco	Orbograph	1	85.24
MICR:	1110160641 0007724834450 1073	12/1/2015 1:35:17 PM CT	CheckDecisioningError	0	0	RD
Amount:	85.24	12/1/2015 1:35:17 PM CT	Created	Remote Batch Deposit	197656	Check Decisioning Failed: Invalid character printed
Item Status:	Rejected					

FIGURE 70 - EVENT HISTORY FOR A BATCH ITEM

Viewing Deposit Details

From the *Deposit Results* page, select the icon under the *Deposit Details* column to see processing details about the deposit. The details will display.





Deposits matching your search criteria						
Records Per Page				10	Displaying Page 1 of 1 Records 1 - 2 of 2	
Item Details	Deposit Details	Create Date	Location	Custom Batch Id	Batch Type	Description
		12/1/2015	Location 1	uiui	Remote Deposit	.New Deposit
		12/21/2015	Avalon Campbell	5646542	Remote Deposit	17:49:04.1335657 12/21/2015 ...

FIGURE 71 - DEPOSIT DETAILS ICON

Reports / Deposit Results / Deposit Details			
Events for deposit Jennie's New Deposit			
Displaying Page 1 of 1 Records 1 - 1 of 1			
Event Occurred	Event	User Name	Description
12/1/2015 1:35 PM CT	Opened	Jennie	

FIGURE 72 - DEPOSIT DETAILS

Bulk Check Operations

The system will allow you to take action on multiple check items, at once. Bulk check operations are available depending on a transaction's status.

Bulk Approve

You may bulk approve transactions that are in the *Awaiting Approval* status.

1. Log in to the system, and select **Transactions**.
2. Under the *Bulk Check Operations* heading, select **Approve**.

Quick Links	
Check Processing	Card Processing
Remote Deposit Scan Remote Deposit Complete Remote Deposit Express Remote Deposit Now Customer ACH Opt Out	Preauthorized Payment Telephone Payment Mailed-In Payment Issue Credit Recurring Payments Swipe Card
ACH Processing	Bulk Operations
Preauthorized Payment Telephone Payment Issue Credit Recurring Payments Recurring Credits Verification Only ACH Client	Capture Void Resolve Approve

FIGURE 73 - BULK APPROVE OPTION

3. The *Bulk Operations* page appears. Specify a *Location* from which to search for transactions. Specify a **Begin Date** and **End Date** for a range in which to search for transactions using MM/DD/YYYY format, or the calendar option provided.

Bulk Operations

☐ Capture
☐ Void
☐ Resolve
☒ Approve

Location ID

Quick Pick

Custom

Start Date

Jan 6, 2016

Start Time

12:00 AM

End Date

Jan 7, 2016

End Time

12:00 AM

Status

Awaiting Approval

Run Report

FIGURE 74 - BULK OPERATIONS PAGE

4. The *Status* for the type of transaction will be *Awaiting Approval* by default. Select the **Run Report** option.
5. The transaction(s) matching your search filters appear. Select the check box(es) next to the transaction(s) you wish to approve. You may also select the check box in the column header to select all the transactions listed.

Transactions matching your query Displaying Page 1 of 1 Records 1 - 13 of 13

<< < > >>

Records Per Page 20






✓	View	Transaction Status	Date Created	Application System
✓			9/18/2015 12:15:51 PM CT	Merchant Portal
✓			9/18/2015 12:17:15 PM CT	Merchant Portal
✓			12/8/2015 10:02:00 AM CT	SmartPay Business
✓			12/8/2015 10:02:42 AM CT	SmartPay Business
✓			12/10/2015 5:46:35 PM CT	SmartPay Business

FIGURE 75 - SELECTING TRANSACTIONS FOR APPROVAL

6. Enter a **Reason** for approving any item(s). Select the **Approve** option. The system will approve the item(s).

Bulk Capture

You may search for and capture transactions in the *Awaiting Capture* status.

1. Log in to the system, and select **Transactions**.
2. Under the *Bulk Check Operations* heading, select **Capture**.
3. The *Bulk Capture* page appears. Select a *Location* from which to search for transactions. Specify a **Begin Date** and **End Date** for a range in which to search for transactions using a MM/DD/YYYY format, or the calendar option provided.
4. Select **Run Report**. The transaction(s) matching your search filters appear. Select the check box(es) next to the transactions you wish to capture. You may also select the check box in the column header to select all the transactions listed.
5. Enter a **Reason** for capturing any item(s). Select the **Capture** option.

Bulk Void

The Bulk Void option can be used for transactions in the *Approved*, *Awaiting Capture*, *Awaiting Approval*, or *Suspended* status.

1. Log in to the system, and select **Transactions**.
2. Under *Bulk Check Operations*, select **Void**.
3. The *Bulk Void* page appears. Select a **Location** from which to search for transactions. Specify a **Begin Date** and **End Date** for a range in which to search for transactions using a MM/DD/YYYY format, or the calendar option provided.
4. Select **Run Report**. The transaction(s) matching your search filters appear. Select the check box(es) next to the transactions you wish to void. You may also select the check box in the column header to select all the transactions listed.
5. Enter a **Reason** for voiding any items. Select the **Void** option.

Bulk Resolve

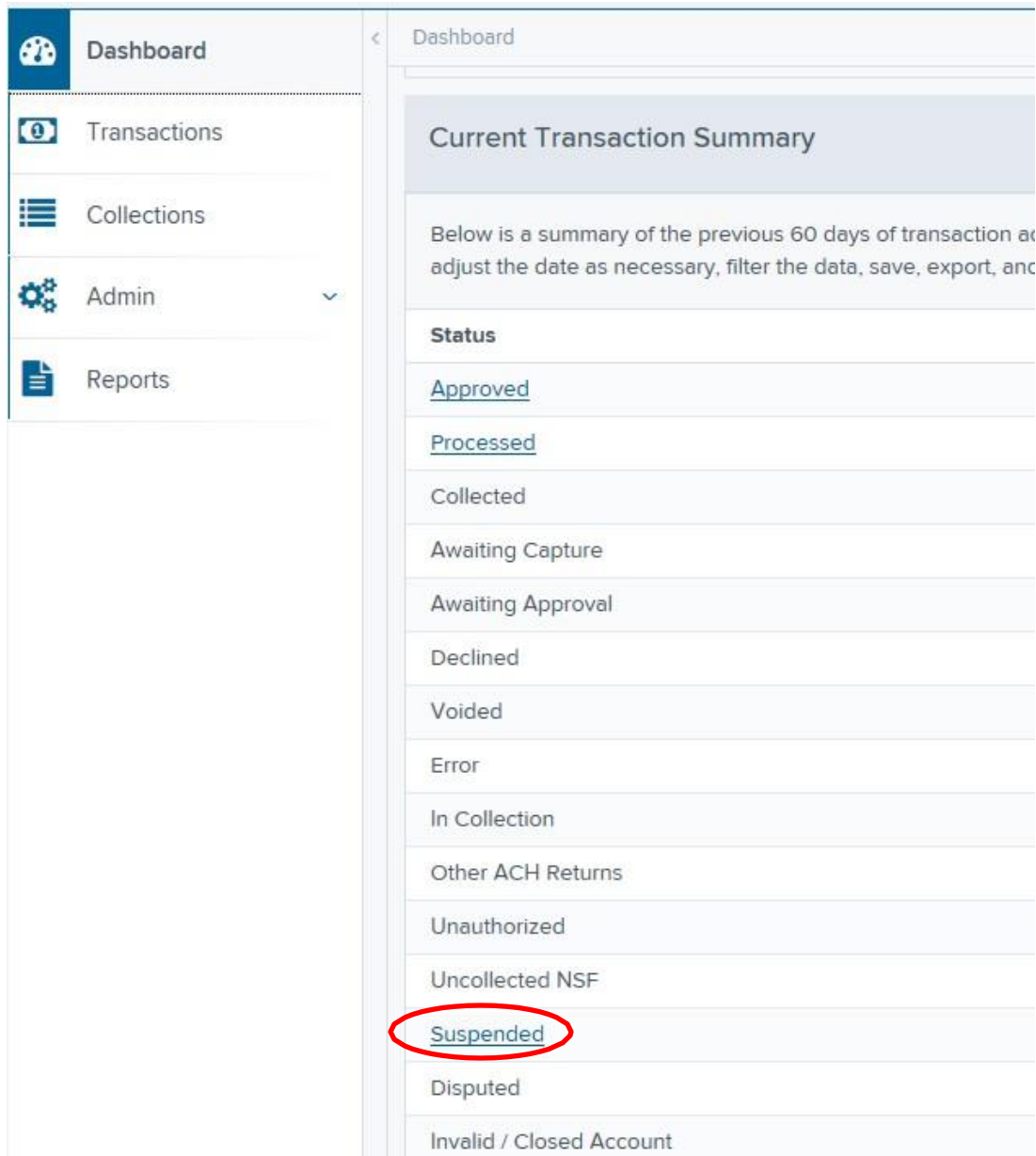
You may resolve multiple transactions with a status of *Declined*, *Voided*, *Invalid/Closed Account*, *Uncollected NSF*, *Disputed*, *Error*, or *In Research*.

1. Log in to the system, and select **Transactions**.
2. Under the *Bulk Check Operations* heading, select **Resolve**.
3. The *Bulk Resolve* page appears. Specify a *Location* from which to search for transactions. Specify a **Begin Date** and **End Date** for a range in which to search for transactions using a MM/DD/YYYY format, or the calendar option provided.
4. Select **Run Report**. The transaction(s) matching your search filters appear. Select the check box(es) next to the transactions you wish to void. You may also select the check box in the column header to select all the transactions listed.

5. Enter a **Reason** for resolving these transactions, and select **Resolve**.



Limit Exception Handling

All items that exceed your daily deposit limit will be placed in “Suspended” status. The Treasury Services Department will obtain approval for the suspended items. If approved, items will be released the same day. You can view the suspended items from your Home screen:



Click on [Suspended](#) to view the suspended items.


To view the item, click on [View](#).

						Page 1 Record
View...	Transaction Date	Status	Response	Payment Type	Operation	
	09/18/2017 04:33:56 PM CT	Suspended	Velocity Amount	Checking	Sale	
	09/18/2017 04:33:56 PM CT	Suspended	Velocity Amount	Checking	Sale	

The following information will be displayed. You can Void the item or view the image.

Transaction Details

Actions ▾

Customer (ID):	Auth. Response:	<div>Mark this transaction void</div> <div>Void</div>
Effective Date: Monday, September 18, 2017	Transaction Number:	
Sale: \$80,000.00	Reference Number:	
 Payment Method: Image Replacement Document	Payment Origin:	

Suspended Items that are Approved:

If an item is approved, it will no longer show as suspended. It will be moved to the [Approved](#) items on your home screen. If the item is declined, it will be removed from the suspended items and you will be notified.

The approved items will post separately from your original deposit.

For example:

- Customer A's limit is \$1000.
- Total approved deposits today total \$500.
- Customer A scans 5 items and closes a deposit that totals \$900:
 1. \$100
 2. \$100
 3. \$200
 4. \$200
 5. \$300
- The first 3 items totaling \$400 will be approved and the deposit processed for \$400.
Total deposits for today now total \$900.
- The 2 remaining items will be suspended.
- Item #4 for \$200 is approved and will post as \$200.
- Item #5 for \$300 is approved and will post as \$300.

Scanner Device Control

Device Control Indicators

The Device Control can be in any one of several statuses. Look to your hidden icons on the bottom navigational bar to view the status of the Device Control. In the following figure, the Device Control icon is yellow, indicating that it is in use.

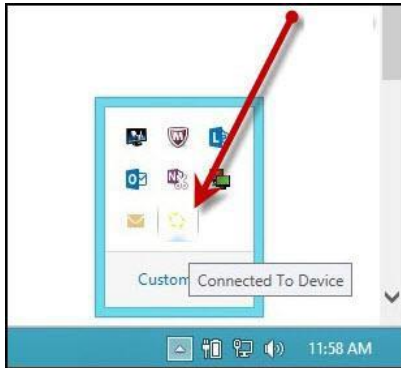


FIGURE 76 - DEVICE CONTROL ICON

- A green icon indicates the Device Control services are available.
- A black icon indicates that the Device Control services are offline.
- A red icon indicates that an error has occurred with the Device Control.

1. Select the **Device Control icon** to bring up the *Device Control Information* window.



FIGURE 77 - DEVICE CONTROL MENU

2. To stop the Device Control, select **Service | Stop**. The Device Control icon and window will appear black.

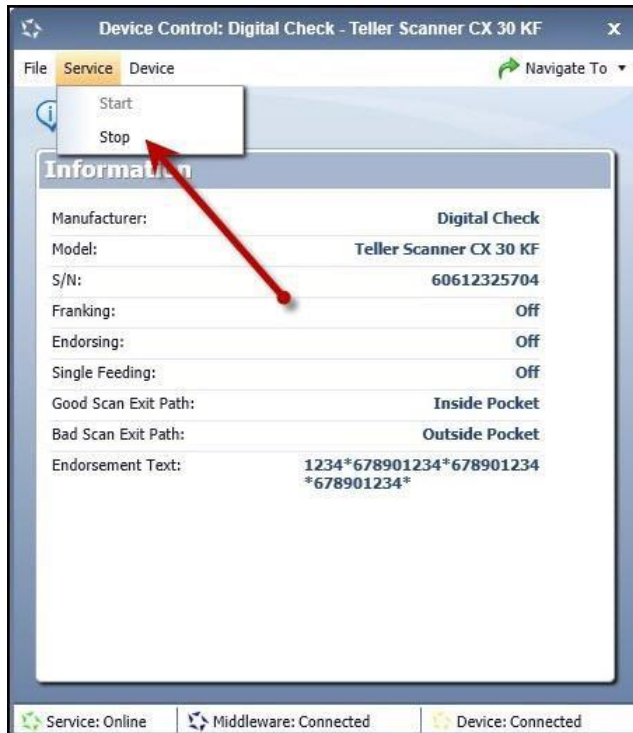


FIGURE 78 - STOP DEVICE CONTROL SERVICE



FIGURE 79 - DEVICE CONTROL, BLACK

3. Select **Navigate To | Information** or **Navigate To | Diagnostics** near the top corner of the Device Control to see more about either the scanner settings or other information.

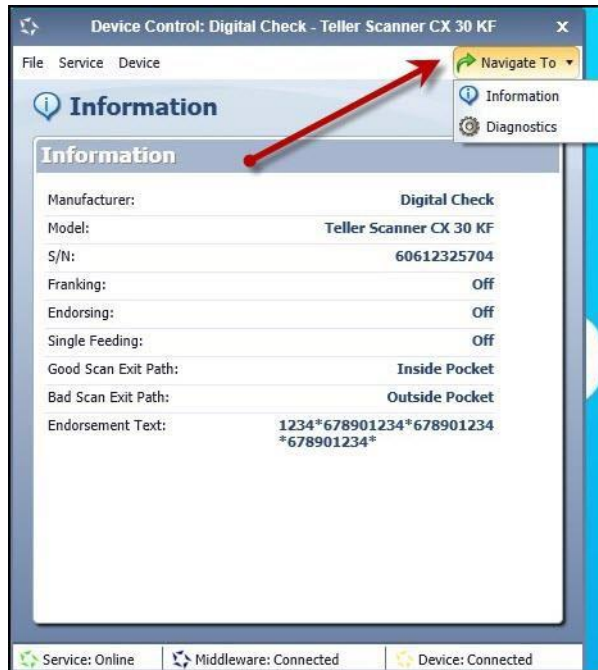


FIGURE 80 - NAVIGATE TO OPTION

Status Messages and Alerts

Use the following steps to limit the amount of alerts and status messages received from Device Control.

1. On the bottom task bar, select the **Show hidden icons** option.

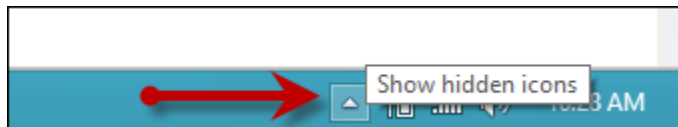


FIGURE 81 - SHOW HIDDEN ICONS OPTION

2. Right-click the Device Control icon and select **Options | Display Alert Balloons**. The option should now be deselected (no checkmark next to the option).

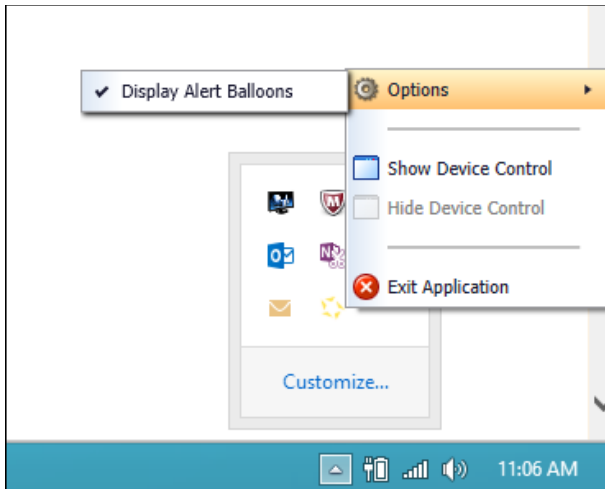


FIGURE 82 - DISPLAY ALERT BALLOONS OPTION, SELECTED

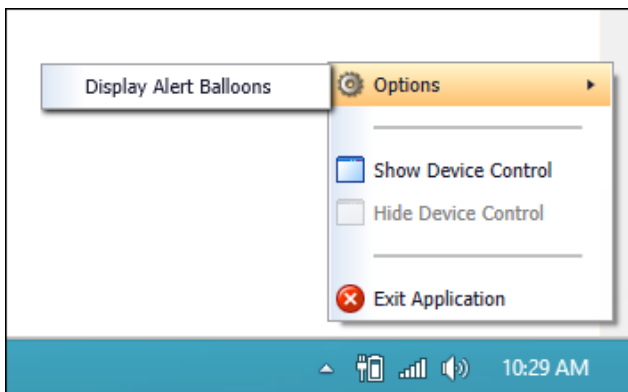


FIGURE 83 - DISPLAY ALERT BALLOONS, DESELECTED

Changing a Scanner

To select a different scanner with the Device Control, follow the steps below.

1. From the *Device Control Information* window, select **Service | Stop**.

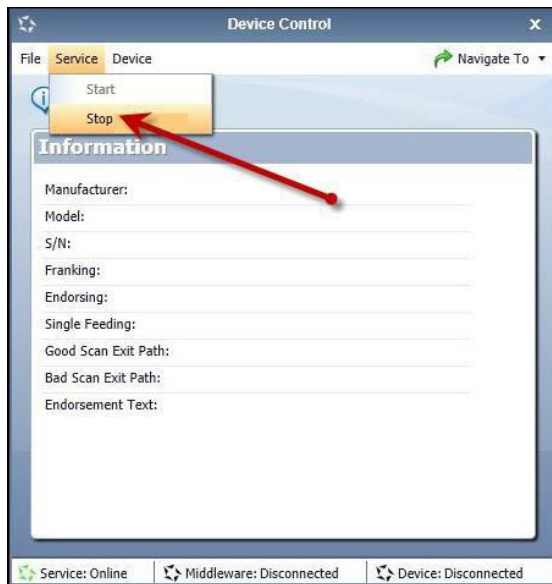


FIGURE 84 - STOP DEVICE CONTROL SERVICE

2. Select **Device | Chooser**.

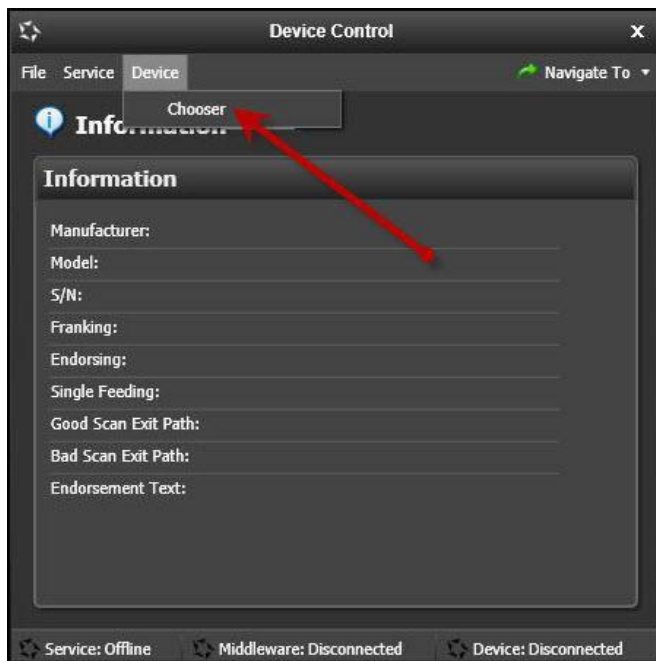


FIGURE 85 - DEVICE | CHOOSER OPTION

3. The *Choose a Device Manufacturer* window displays. Select a manufacturer for the scanner you wish to utilize. You may also opt to select a particular model.



FIGURE 86 - SELECTING A NEW SCANNER AND MODEL

4. If the scanner and model you selected has not yet been installed, the system will display an indicator, *Not Installed!* You have the option of installing this scanner if applicable.



FIGURE 87 - SELECTED DEVICE NOT INSTALLED

Uninstalling a Scanner

Use the following steps to uninstall a scanner once you have Device Control installed.

1. In the Device Control window under the *Choose a Device Manufacturer* heading, select the **Uninstall** option.



FIGURE 88 - UNINSTALL OPTION

2. The *Add/Remove Devices* page displays. Choose the scanner to uninstall, and select **Uninstall**.

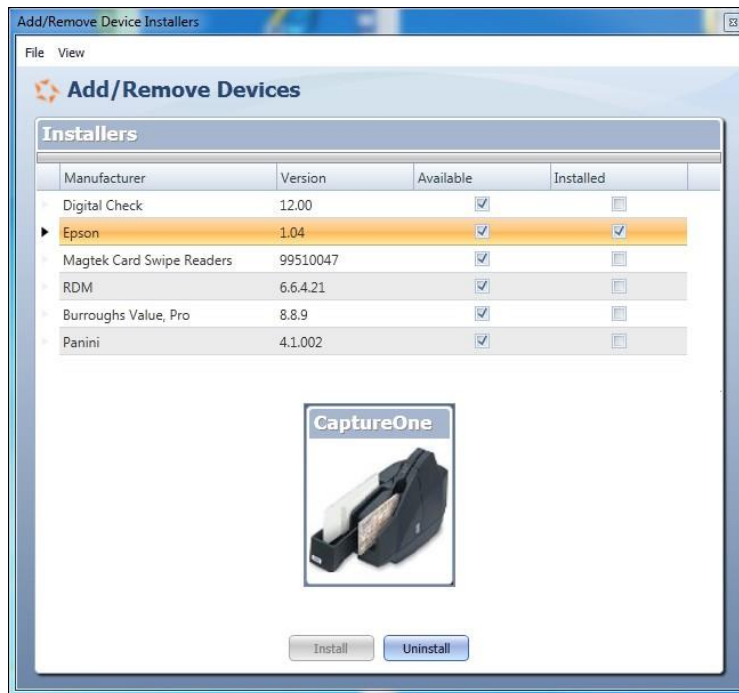


FIGURE 89 - SELECTING A SCANNER WITH UNINSTALL OPTION

3. The *Uninstall Wizard* initiates. Complete the instructions, and select **Next** to continue.

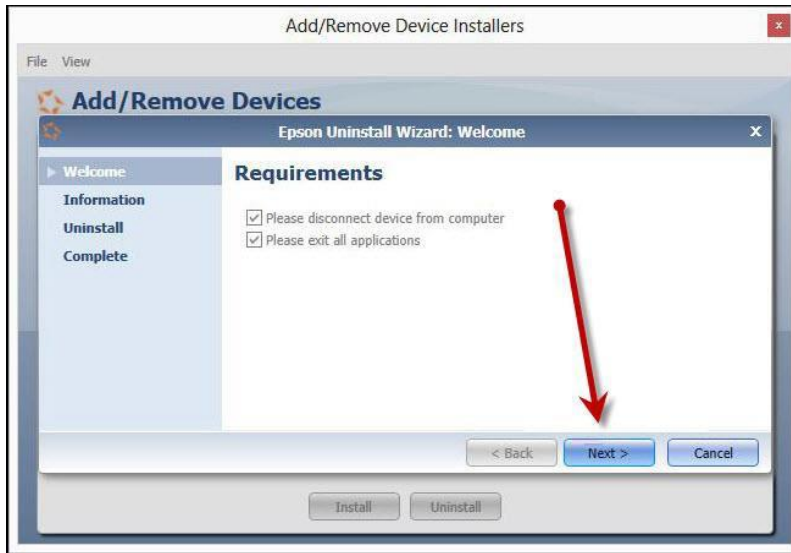


FIGURE 90 - UNINSTALL WIZARD WITH NEXT OPTION

4. The installer information for the scanner appears. Select **Next** to continue.



FIGURE 91 - UNINSTALL WIZARD WITH INSTALLER INFORMATION

5. The uninstallation process will complete. Select **Next** to continue.



FIGURE 92 - UNINSTALL COMPLETE PROMPT

6. Once the process is complete, select **Finish**. The scanner you selected will now be uninstalled.



FIGURE 93 - UNINSTALL FINISH